



SREE SANKARA COLLEGE, KALADY

INSTITUTION DEVELOPMENT PLAN

2023-24



**Prepared By
IQAC**

**SANKAR NAGAR, MATTOOR, KALADY P. O., ERNAKULAM
DIST, KERALA, PIN: 683574,
PH:0484-2462341
WWW.SSC.EDU.IN, IQAC@SSC.EDU.IN**



**SREE SANKARA COLLEGE
KALADY**

INSTITUTION DEVELOPMENT PLAN

2023-24

**Prepared By
Internal Quality Assurance Cell**

**WWW.SSC.EDU.IN
SREE SANKARA COLLEGE, SANKAR NAGAR
MATTOOR, KALADY-683574**

TABLE OF CONTENTS

TITLE	PAGE NO.
Institution Profile	1
Institutional Development Plan – Basic information of institute	2
Vision	29
Mission	29
SWOC	31
Strategic Plan	34
Prospective Plan	37
Action Plan	41
Detailed description of Goals	44
Institutional Project Budget	52
ANNEXURES	73

INSTITUTION PROFILE

Sree Sankara College Kalady established in 1953 was founded by Swami Agamananda, a social reformer and a foresighted scholar of Sri Ramakrishna Advaita Ashram. The institution was established with a view to perpetuate the memory and doctrines of the great saint and philosopher, Adi Sankaracharya and to nurture his birth place as a cultural citadel. The foundation stone was laid on 28 August, 1953 by His Highness The Maharaja of Travancore in the presence of The Maharaja of Cochin and several other distinguished personalities. Since then, the college has taken up the onus to impart an overall quality education to generate fruitful and responsible citizens. Situated in Kalady, the birthplace of Jagadguru Sankaracharya, this abode of learning embodies a spiritual aura. Kalady is a semi-urban region located to the north of Ernakulam district, in the state of Kerala. The lush greenery of the college bestows the campus with a serene and tranquil ambience.

The vision & mission of the organization was to establish a Centre of Higher Learning with two major objectives —dissemination of knowledge in tune with a university curriculum and fostering community development.

INSTITUTIONAL DEVELOPMENT PLAN

BASIC INFORMATION ABOUT THE INSTITUTION

Name and Address of the College

Name	SREE SANKARA COLLEGE
Address	Sree Sankara College Sankar Nagar Mattoor Kalady P.O Ernakulam Dist.
City	Ernakulam
State	Kerala
Pin	683574
Website	www.ssc.edu.in
Type of Institution	Govt. Aided Affiliated College
Status of Institution	Non Autonomous

CONTACT FOR COMMUNICATION

Designation	Name	Telephone with STD Code	Mobile	Email
Principal	Dr. Preethi Nair	0484-2462341	9539010653	info@ssc.edu.in
IQAC / CIQA coordinator	Dr. Manju T	0484-2462359	9497445181	manjut@ssc.edu.in

ORGANIZATIONAL STRUCTURE FOR OPERATION AND MANAGEMENT

Role and Responsibilities of Key Positions/ bodies

I. Governing Body

Role: The Governing Body is responsible for the overall governance and strategic direction of Sree Sankara College Kalady.

Responsibilities:

1. Formulating and approving policies that align with the college's mission and vision.
2. Ensuring financial stability and approving budgets.
3. Appointing key leadership positions, including the Principal.
4. Monitoring and evaluating the college's performance against set goals.
5. Handling legal and compliance matters.

II. Board of Directors

Role: The Board of Directors plays a crucial role in providing guidance and support to the college administration.

Responsibilities:

1. Offering strategic advice and insights to the Governing Body.
2. Advocating for the college in the community and among stakeholders.
3. Participating in decision-making processes related to major institutional changes.
4. Reviewing and endorsing financial plans and major expenditures.

III. Managing Director

Role: The Managing Director oversees the day-to-day operations of the college and ensures that it operates efficiently and effectively.

Responsibilities:

1. Implementing policies and decisions made by the Governing Body.
2. Providing leadership to various departments and fostering a positive work environment.
3. Managing financial resources and ensuring fiscal responsibility.
4. Representing the college externally and building partnerships.
5. Encourage employees to establish their state of art professional skills with positive and affectionate care and involvement

IV. Principal

Role: The Principal is the academic leader of the college and is responsible for its overall educational and administrative functions.

Responsibilities:

1. Academic leadership, including curriculum development and assessment.
2. Faculty recruitment, development, and evaluation.
3. Student affairs and discipline.
4. Implementation of policies and decisions in collaboration with the Governing Body.

V. College Council

Role: The College Council is a representative body comprising faculty, staff, and student representatives, providing input on various aspects of college life.

Responsibilities:

1. Addressing academic and non-academic concerns of students and faculty.
2. Advising the administration on matters related to campus life.
3. Participating in decision-making processes on issues that impact the college community.

VI. IQAC

Role: The IQAC focuses on ensuring and enhancing the quality of education and overall institutional functioning.

Responsibilities:

1. Developing and implementing quality assurance policies and procedures.
2. Monitoring and evaluating academic and administrative processes.
3. Conducting internal audits and assessments to ensure compliance with quality standards.
4. Facilitating continuous improvement through feedback and recommendations.

B. Board of Governance

Padmasree V R Gowrishankar (Administrator)	Sri. D Dasaratharaman
Sri. K S Neelakanta Iyer	Sri. H R Binod
Sri. V Ramalingam	Sri. Vidyashankar Krishnan

Sri. Murali Ananthasubramanian Pathai	Sri. Krishna Venkatesh
Sri. K Anand (Managing Director)	Sri. T P Sivaramakrishnan (Auditor)
Dr. Preethi Nair (Ex-offico) Principal	

ACADEMICS

- Sree Sankara College has 18 Departments offering 39 programmes including 16 UG, 10 PG and 5 PhD programmes in aided and self-financing mode.
- The College is situated in the Focus District (Kalady Gramapanchayath, Ernakulam District)
- The College has a student enrolment of 2037

UG PROGRAMMES

Sl. No.	Department	Programmes Offered
1.	Botany	1. B. Sc. Botany– Six Semesters
2.	Chemistry	2. B. Sc. Chemistry – Six Semesters
3.	Commerce	3. B. Com (Finance and Tax) – Six Semesters 4. B. Com (Computer Application) – Six Semesters
4.	Economics	5. B. A. Economics – Six Semesters
5.	English	6. B. A. English – Six Semesters
6.	Hindi	7. B. A. Hindi – Six Semesters
7.	History and Politics	8. B. A. History – Six Semesters
8.	Mathematics	9. B. Sc. Mathematics– Six Semesters
9.	Physics	10. B. Sc. Physics – Six Semesters
10.	Sanskrit	11. B. A. Sanskrit – Six Semesters
11.	Statistics and Computer Science	12. B. Sc. Statistics – Six Semesters
12.	Zoology	13. B. Sc. Zoology – Six Semesters
13.	Microbiology SF	14. B. Sc. Microbiology – Six Semesters
14.	Biotechnology SF	15. B. Sc. Biotechnology – Six Semesters

15.	B Voc. Department (DDU Kaushaal Kendra)	16. B. Voc. Renewable Energy Management – 6 semesters
-----	--	---

PG PROGRAMMES

Sl. No.	Department	Programmes Offered
1.	Chemistry	1. M. Sc. Applied Chemistry – Four Semesters
2.	Commerce	2. M. Com Finance and Taxation – Four Semesters
3.	Economics	3. M. A. Economics – Four Semesters
4.	English	4. M. A. English – Four Semesters
5.	Microbiology	5. M. Sc. Microbiology – Four Semesters
6.	Physics	6. M. Sc. Physics – Four Semesters
7.	Sanskrit	7. M. A. Sanskrit – Four Semesters
8.	Statistics and Computer Science	8. M. Sc. Statistics and Data Science– Four Semesters
9.	Biochemistry SF	9. M. Sc. Biochemistry – Four Semesters
10.	Environment Science and Management SF (PG)	10. M. Sc. Environment Science and Management – Four semesters

PhD Programmes

1. PhD Chemistry
2. PhD Economics
3. PhD English
4. PhD Microbiology
5. PhD Sanskrit

In addition, the college offers Diploma and Certificate Programmes under UGC-NSQF Norms. Moreover, various departments offer skill based Add-On programmes for enhancing the employability skills of its students. The list of skill based programmes offered is given below.

Add-On Courses/ UGC-NSQF (Certifications/Diploma)

Sl. No	Title	Offering Department	Programme Code
1	Precision Health and Wellness	Commerce	SSCADP03
2	Certificate Course on Computerised Accounting	Commerce	SSCADP05
3	Aviation and Supply Chain Management	Commerce	SSCADP26
4	Digital Marketing	Commerce	SSCADP27
5	Certificate Course on Cosmetology	Commerce	SSCADP24
6	Grooming skills for Competitive Exams	Economics	SSCADP06
7	Translation and Hindi Computing	Hindi	SSCADP09
8	Certificate Course on Museology in India	History and Politics	SSCADP10
9	French for Beginners	English	SSCADP11
10	Mathematics for Competitive Exams	Mathematics	SSCADP12
11	Techniques in Biological Science	Microbiology	SSCADP13
12	Arduino and Compatibles	Physics	SSCADP14
13	Introduction to Machine Learning using Python	Statistics and Computer Science	SSCADP17
14	Skill Development Course on Energy Conservation Strategies	Zoology	SSCADP18
15	Scientific Waste Management: Challenges and Opportunities	Biochemistry (PG)	SSCADP19
16	HACCP - Level 3	Microbiology	SSCADP20
17	Bioinformatics and computer aided drug designing	Biotechnology	SSCADP21
18	Introduction to Remote Sensing, Global Navigation and Satellite System (GNSS) and GIS	Environment Science and Management (PG)	SSCADP22
19	Bank Coaching by Aptitech	Placement and Career Guidance Cell	SSCADP23
20	Soft Skill Training and Personality Development	Placement and Career Guidance Cell	SSCADP07
21	Mobile App Designing	Statistics and Computer Science	SSCADP25
22	Diploma Course in Airline Airport Hospitality & Travel Management Programme	Pegasus Aviation Academy	SSCADP28
23	Certificate Course on Vastusastra- Ancient Architectural Science of Bharath	Sanskrit	SSCADP16

24	Basics of Journalism and Content Writing	Sanskrit	SSCADP29
25	Vrikshayurveda -The Botanical science of Bharath	Sanskrit	SSCADP30
26	Jyotirvijnanam -Ancient Astronomy of Bharath	Sanskrit	SSCADP31
27	Technical literature in Sanskrit	Sanskrit	SSCADP32
28	Introduction of LaTeX for scientific writing	Chemistry	SSCACP33
29	Stock Market Trading for Beginners	Commerce	SSCADP04
UGC-NSQF Approved Courses			
1	Certificate Programme on Stock Market Trading (UGC-NSQF)	Commerce	C-SMT
2	Certificate Programme on Energy Audit in Building Sector (UGC-NSQF)	Physics	C-EABS
3	Certificate Programme on Vermicomposting(UGC-NSQF)	Zoology	C-VC
4	Certificate Programme on Water Quality Monitoring Techniques (UGC-NSQF)	Chemistry	C-WQMT
5	Diploma in Yoga Instructor (UGC-NSQF)	Sanskrit	D-YI
6	Diploma in Event Management (UGC-NSQF)	B Voc	D-EM
7	Diploma in Solar PV Installation and Maintenance (UGC-NSQF)	B Voc	D-SIM
8	Diploma in Film Making (UGC-NSQF)	B Voc	D-FM

STUDENT PROFILE

The college caters to the academic needs of more than 2000 students every year, a majority of which belong to socially and economically challenged categories. More than 60% of students are female, and a large number belong to first generation learners. The student Profile of the academic year 2022-23 is given below:

Total	Girls	Boys
2037	1350	687

TEACHING STAFF PROFILE

The college has a total of 119 teaching staff including aided and un-aided, out of which 51 are PhD holders. The Teachers-Profile of the academic year 2022-23 is given below:

Total	Female	Male
119	85	34

NON-TEACHING STAFF PROFILE

For smooth administration of the college, we have 44 non-teaching staff including administrative and technical. The Non-Teaching staff Profile of the academic year 2022-23 is given below:

Total	Female	Male
44	19	25

Department-Wise Teacher-Student Ratio

Programme level (UG/PG)	Programme	Sanctioned strength	Number of Students Admitted	Student Teacher Ratio
UG	Botany	32	27	24:1
UG	Chemistry	48	48	13:1
PG	Applied Chemistry	12	18	4:1
PhD	Chemistry	8	7	
UG (Tax)	Commerce	50	70	16:1
UG (CA)	Commerce	24	35	8:1
PG	Commerce	15	18	4:1
UG	Economics	45	46	23:1
PG	Economics	12	16	5:1
PhD	Economics	8	15	
UG	English	40	51	10:1
PG	English	15	24	4:1
PhD	English	12	12	
UG	Hindi	25	30	15:1
UG	History	40	46	36:1
UG	Mathematics	32	30	23:1
PG	Microbiology	10	15	7:1
PhD	Microbiology	16	16	
UG	Physics	40	35	14:1
PG	Physics	12	14	3:1
UG	Sanskrit	10	6	3:1
PG	Sanskrit	10	5	1:1
PhD	Sanskrit	8	8	
UG	Statistics	20	24	9:1

PG	Statistics	12	15	6:1
UG	Zoology	32	35	24:1
PG	Biochemistry (SF)	20	25	10:1
UG	Biotechnology (SF)	30	42	30:1
UG	Microbiology (SF)	40	40	28:1
PG	EVS (SF)	20	27	13:1
UG	B. voc. REM (SF)	30	10	10:1

ENROLMENT STATUS AND GAP ANALYSIS

Sl. No.	Departments	Course Offered		Percentage of Posts filled	GAP
1	Commerce	UG	2	100	Nil
		PG	1		
		PG+			
		Add-on	2		
		Certificate	2		
2	Economics	UG	1	84	Gap Identified
		PG	1		
		PG+			
		Ph.D	1		
		Add-on	1		
3	English	UG	1	84	Gap Identified
		PG	1		
		PG+			
		Ph.D	1		
		Add-on			
4	Hindi	UG	1	100	Nil
		Add-on	1		
5	History & Politics	UG	1	100	Nil
		Add-on	1		
6	Sanskrit	UG	1	100	Nil

		PG	1		
		PG+			
		Ph.D	1		
		Diploma	1		
		Add-on	1		
7	Biochemistry	UG	-	100	Nil
		PG	1		
		Add-on	1		
8	Biotechnology	UG	1	100	Nil
		PG	-		
		Add-On	1		
9	Botany	UG	1	50	Gap Identified
		PG	-		
10	Chemistry	UG	1	100	Nil
		PG	1		
		PG+			
		Ph.D	1		
		Add-on	1		
11	Environmental Science	UG	-	100	Nil
		PG	1		
		Add-on	1		
12	Mathematics	UG	1	100	Nil
		PG	-		
		Add-on	1		
13	Microbiology (SF)	UG	1	100	Nil
		PG	-		
14	Microbiology	UG	-	100	Nil
		PG	1		
		PG+			
		Ph.D	1		
		Add-on	1		
15	Physics	UG	1	100	Nil
		PG	1		
		PG+	-		
		Add-on	1		

16	Statistics & Computer Science	UG	1	58	Gap Identified
		PG	1		
		PG+			
		Add-on	2		
17	Zoology	UG	1	100	Nil
		PG	-		
		PG+	-		
		Add-on	1		
18	B.Voc Renewable Energy Management	UG	1	100	Nil
		PG			
		PG+			
		Add-on			
19	Malayalam	Add-on	1	100	Nil
20	Physical Education			100	Nil

MoU / Collaboration / linkage (Last Two Years)

Sl. No.	Name of agency with which MoU/Linkage is signed	Name of the collaborating agency
1.	Research collaboration - MoU	MagGenome Technologies Pvt Ltd
2.	Collaboration in Academic activities - Linkage	Swadhyaya Research Foundation, Aluva
3.	Research collaboration	UANL, Mexico
4.	Skill Training - MoU	Galaxy Environ, Kalady
5.	Entrepreneurship Skill Development-MoU	Garga M Commerce Pvt Ltd
6.	Skill Training - MoU	Geojit Foundation, Ernakulam
7.	Research and Training/Cooperation in Education and Research - MoU	PVT Merit Biolabs, Kochi
8.	Skill Training - MoU	Mithradham Renewable Energy Centre, Aluva
9.	Skill Training - MoU	Paravur Municipality, Ernakulam District
10.	Skill Training - MoU	Rishi Gurukulam, Ernakulam
11.	On Job Training and Skill Development Programmes - MoU	K C Kopar Energy Solutions Pvt. Ltd. Ernakulam
12.	Student Projects - MoU	Kerala Agricultural University
13.	Student Projects - MoU	PVT Merit Biolabs, Kochi
14.	Faculty Training - Linkage	STRIDE, M G University, Kottayam, Kerala
15.	Skill Training - MoU	Additional Skill Aquisition Programme (ASAP), Govt of Kerala and Govt Polytechnic College, Perumbavoor
16.	Research collaboration - MoU	ICAR-CIFT, Ernakulam
17.	Student Projects - MoU	KAU, Thrissur (Aromatic & Medicinal Plants Research station)
18.	Research and Training/Cooperation in Education and Research - MoU	International and Inter University Centre for Nanoscience and Nanotechnology (IIUCNN), MG University
19.	Waste Management - MoU	Plan@earth
20.	Value adding Programs for students - MoU	Sree Vastheyam Vastu Consultants and Builders Pvt. Ltd.
21.	Joint academic programmes and FDPs - MoU	SSV College Valayanchirangara

22.	Collaboration on IKS - MoU	SSV College Valayanchirangara
23.	Value adding Programs for students - MoU	St.Peter's College, Kolenchery
24.	Academic Cooperation - MoU	St.Xavier's College for Women, Aluva, Ernakulam
25.	Academic activities - MoU	Swamiyar Madom Charitable Trust, Kottayam
26.	Waste Management - MoU	Urban Trash, Ernakulam
27.	Academic Collaboration - MoU	Zoological Society of Kerala
28.	Academic Activities and Popularisation of Vedic Mathematics - MoU	Institute of Advancement of Vedic Mathematics, UK
29.	Skill Training - MoU	Pattanam Designory, Ernakulam
30.	Academic Collaboration - MoU	P S Associates
31.	Academic Collaboration - MoU	St Peter's College, Kolenchery
32.	Academic Collaboration - MoU	Marthoma College, Perumbavoor
33.	Academic Collaboration - MoU	Marthoma College, Perumbavoor
34.	Academic Collaboration - MoU	St Xavier's College, Aluva
35.	Academic Collaboration - MoU	U C College Aluva

Sl. No.	Name of the MoU / Collaboration / linkage	Name of the collaborating agency / institution / industry / corporate house with whom the MoU / collaboration / linkage is made, with contact details	Year of signing MoU / collaboration / linkage	Duration of MoU / collaboration / linkage	Department
1	A Study On Dry Waste Management Of Households And Shops -A Case Study Of Kadungalloor Grama Panchayat	Planatearth	2022	2 months	Economics
2	Kerala's Premier Food Processing &Packaging Exhibition	CRUZ EXPOS-08893304450	2022	1 day	UG_Microbiology
3	Kerala's Premier Food Processing &Packaging Exhibition	CRUZ EXPOS-08893304450	2022	1 day	UG_Microbiology

4	Kerala's Premier Food Processing &Packaging Exhibition	CRUZ EXPOS-08893304450	2022	1 day	UG_Microbiology
5	Kerala's Premier Food Processing &Packaging Exhibition	CRUZ EXPOS-08893304450	2022	1 day	UG_Microbiology
6	Kerala's Premier Food Processing &Packaging Exhibition	CRUZ EXPOS-08893304450	2022	1 day	UG_Microbiology
7	Kerala's Premier Food Processing &Packaging Exhibition	CRUZ EXPOS-08893304450	2022	1 day	UG_Microbiology
8	Hot	Alphazee System Venu 9388604426	2022	15 days	B.Voc
9	Hot	Alphazee System Venu 9388604426	2022	15 days	B.Voc
10	Hot	Alphazee System Venu 9388604426	2022	15 days	B.Voc
11	Hot	Alphazee System Venu 9388604426	2022	15 days	B.Voc
12	Hot	Alphazee System Venu 9388604426	2022	15 days	B.Voc
13	Hot	Alphazee System Venu 9388604426	2022	15 days	B.Voc
14	Hot	Alternate Energy Enterprises V V James 6282429677	2022	15 days	B.Voc
15	Hot	Alphazee System Venu 9388604426	2022	15 days	B.Voc
16	Hot	Alphazee System Venu 9388604426	2022	15 days	B.Voc
17	Hot	Alphazee System Venu 9388604426	2022	15 days	B.Voc
18	MOU For Educational Purpose	Zoological Society of Kerala	2022	1 year	Zoology
19	Joint Academic Programmes And Fdps	SSV College Valayanchirangara	2022	5 Years	Hindi
20	Research Collaboration	CIFT	2022	3 Years	PG_Microbiology
21	Add-On Course	St.Peter's College, Kolenchery	2022	1 Year	Sanskrit
22	Add-On/Certificate Programme	Sree Vastheyam Vastu Consultants and Builders Pvt. Ltd.	2022	5 Years	Sanskrit
23	Faculty Exchange	SSV College Valayanchirangara	2022	5 Years	Sanskrit
24	Spatial And Temporal Variation Of Weather Patterns In Kerala	Kerala Agriculture University, Vellanikkara	2022	April 2022- July 2022	Environment Studies and Management
25	A Geospatial Approach For Assessing The Drought Condition In Thrissur District	KAU, Thrissur (Aromatic & Medicinal Plants Research	2022	3 Months	Environment Studies and

		station)			Management
26	Comparison Of Statistical Models For Forecasting Of Rice Yield In Kerala	KAU, Thrissur (Aromatic & Medicinal Plants Research station)	2022	5 Months	Environment Studies and Management
27	Comparative Morphological And Biochemical Evaluation Of Boerhavia Diffusa And Boerhavia Erecta In Eranakulam District	KAU, Thrissur (Aromatic & Medicinal Plants Research station)	2022	6 Months	Environment Studies and Management
28	Comparative Morphological And Biochemical Evaluation Of Eclipta Prostrata Ecotypes In Eranakulam District	KAU, Thrissur (Aromatic & Medicinal Plants Research station)	2022	7 Months	Environment Studies and Management
29	Faculty Sharing For Mathematics	St.Xavier's College for Women	2022	1 Year	Mathematics
30	Add-On Course In Organic Composting	Zoological Society of Kerala	2022	One Year	Zoology
31	EVALUATION OF OXIDATIVE DAMAGE CAUSED BY BACTERIA IN THE LEAVES OF Chromolaena Odorata	Amplicon Biolab,KINFRA,kakkanchery	2022	Three Months	Biotechnology
32	Extraction And Characterization Of Collagen From Meat Industry By Products/Fish Scale And Preparation Of Moisturizing Skin Ointment.	Merit Biolab,Palarivattom,Ernakulam	2022	Three Months	Biotechnology
33	Endophytic Bacterial Isolation From Wild Orchids/Vanda And Evaluating Its Potential For IAA/Gibberellic Acid Production In Orchids.	Merit Biolab,Palarivattom,Ernakulam	2022	Three Months	Biotechnology
34	UTILIZATION OF PINEAPPLE PEEL AND RICE WASHING WATER TO PRODUCE SINGLE CELL PROTEIN USING Saccharomyces Cerevisiae	Merit Biolab,Palarivattom,Ernakulam	2022	Three Months	Biotechnology
35	Partial Characterization Of Pyocyanin From Pseudomonas Aeruginosa , And Analysis Of Its Antimicrobial Potency Against Food Pathogens.	Merit Biolab,Palarivattom,Ernakulam	2022	Three Months	Biotechnology
36	Partial Characterization Of Pyocyanin From Pseudomonas Aeruginosa , And Analysis Of Its Antimicrobial Potency Against Food Pathogens.	Merit Biolab,Palarivattom,Ernakulam	2022	Three Months	Biotechnology
37	Molecular Characterization Of Endophytic Bacterium From Medicinal Plant And Evaluation Of Its Potential For Beneficial Secondary Metabolite Production	Merit Biolab,Palarivattom,Ernakulam	2022	Three Months	Biotechnology
38	Antibiofilm Activity Of Copper Oxide Nanoparticle Against Multidrug Resistant Biofilm Forming Bacteria.	Merit Biolab,Palarivattom,Ernakulam	2022	Three Months	Biotechnology

39	Formulation Of Probiotic Health Drinks Using Probiotic Bacteria Isolated From Honeybee, Molecular Characterization And Screening For Various Nutritional Aspects.	Merit Biolab,Palarivattom,Ernakulam	2022	Three Months	Biotechnology
40	Antibiofilm Activity Of Copper Oxide Nanoparticle Against Multidrug Resistant Biofilm Forming Bacteria.	Merit Biolab,Palarivattom,Ernakulam	2022	Three Months	Biotechnology
41	EVALUATION OF OXIDATIVE DAMAGE CAUSED BY BACTERIA IN THE LEAVES OF Chromolaena Odorata	Amplicon Biolab,KINFRA,kakkanchery	2022	Three Months	Biotechnology
42	UTILIZATION OF PINEAPPLE PEEL AND RICE WASHING WATER TO PRODUCE SINGLE CELL PROTEINS USING Saccharomyces Cerevisiae	Merit Biolab,Palarivattom,Ernakulam	2022	Three Months	Biotechnology
43	EVALUATION OF OXIDATIVE DAMAGE CAUSED BY BACTERIA IN THE LEAVES OF Chromolaena Odorata	Amplicon Biolab,KINFRA,kakkanchery	2022	Three Months	Biotechnology
44	Extraction And Characterization Of Collagen From Meat Industry By Products/Fish Scale And Preparation Of Moisturizing Skin Ointment.	Merit Biolab,Palarivattom,Ernakulam	2022	Three Months	Biotechnology
45	Antibiofilm Activity Of Copper Oxide Nanoparticle Against Multidrug Resistant Biofilm Forming Bacteria.	Merit Biolab,Palarivattom,Ernakulam	2022	Three Months	Biotechnology
46	UTILIZATION OF PINEAPPLE PEEL AND RICE WASHING WATER TO PRODUCE SINGLE CELL PROTEINS USING Saccharomyces Cerevisiae	Merit Biolab,Palarivattom,Ernakulam	2022	Three Months	Biotechnology
47	EVALUATION OF OXIDATIVE DAMAGE CAUSED BY BACTERIA IN THE LEAVES OF Chromolaena Odorata	Amplicon Biolab,KINFRA,kakkanchery	2022	Three Months	Biotechnology
48	Endophytic Bacterial Isolation From Wild Orchids/Vanda And Evaluating Its Potential For IAA/Gibberellic Acid Production In Orchids.	Merit Biolab,Palarivattom,Ernakulam	2022	Three Months	Biotechnology
49	Extraction And Characterization Of Collagen From Meat Industry By Products/Fish Scale And Preparation Of Moisturizing Skin Ointment.	Merit Biolab,Palarivattom,Ernakulam	2022	Three Months	Biotechnology
50	Molecular Characterization Of Endophytic Bacterium From Medicinal Plant And Evaluation Of Its Potential For Beneficial Secondary Metabolite Production	Merit Biolab,Palarivattom,Ernakulam	2022	Three Months	Biotechnology
51	Endophytic Bacterial Isolation From Wild Orchids/Vanda And Evaluating Its	Merit Biolab,Palarivattom,Ernakulam	2022	Three Months	Biotechnology

	Potential For IAA/Gibberellic Acid Production In Orchids.	m			
52	PCR Amplification Of Human GDPDH Gene Sequencing And Sequence Analysis	Scopeful Bioresearch PVT LTD	2022	Three Months	Biochemistry
53	Natural Coagulants In Water Purification With Reference To Carica Papaya And Ocimum Tenuiflorum	Scopeful Bioresearch PVT LTD	2022	Three Months	Biochemistry
54	Serine /Threonine Kinase ,ERK Mediated Phosphorylation Controls Star - PAP Stability And Regulates Cancer Progression	RGCB	2022	Three Months	Biochemistry
55	Effect Of EGFR Inhibition On Breast Cancer Cellular Proliferation And Survival In Vitro	Regional cancer centre	2022	Three Months	Biochemistry
56	Feasibility Of Cytokeratin Based Circulating Tumor Cells Detection In Oral Cancer Patients	Regional cancer centre	2022	Three Months	Biochemistry
57	Isolation Of Exosomes Derived From Cell Culture Supernatants Of Rat Bone Marrow Mesenchymal Stem Cells	Sree Chitra Thirunal Institute for medical sciences and technology, Trivandrum	2022	Three Months	Biochemistry
58	Molecular Charecterization Of Salivary Bacterial Microbiomes	Sree Chitra Thirunal Institute for medical sciences and technology, Trivandrum	2022	Three Months	Biochemistry
59	Antioxidant Activity Of Cissus Quadrangularis	Scopeful Bioresearch PVT LTD	2022	Three Months	Biochemistry
60	Role Of STIL Gene In Colorectal Cancer Proliferation	RGCB	2022	Three Months	Biochemistry
61	Comparisson Of Wound Healing Property Of Chromolaena ,Centella And Aloe Vera Using In Vitro Rat Myoblast L6 Wound Model	Scopeful Bioresearch PVT LTD	2022	Three Months	Biochemistry
62	Expression Of Glucose Transporter 4 Gene In Azardichtha Indica And Trigonella Foenum Graceum Aqueous Extract Treated Rat Myoblast L6 CELL LINES	Scopeful Bioresearch PVT LTD	2022	Three Months	Biochemistry
63	COMPARATIVE BIOCHEMICAL ANALYSIS OF WHEY PROTEINS IN Bos TAURUS AND CAPRA HIRCUS	Scopeful Bioresearch PVT LTD	2022	Three Months	Biochemistry
64	Effect Of Stem Cell Therpy On Bicomycin Induced Lung Injury In Model Animals- A Histomorphometric Study	Sree Chitra Thirunal Institute for medical sciences and technology, Trivandrum	2022	Three Months	Biochemistry
65	Isolation Of Exosomes Derived From Cell Culture Supernatants Of Rat Bone Marrow Mesenchymal Stem Cell	SREE CHITRA TIRUNAL INSTITUTE FOR MEDICAL SCIENCES & TECHNOLOGY,	2022	Three Months	Biochemistry

		TRIVANDRUM			
66	Effects Of Andrographis Paniculata And Tinospora Cordifolia Combination On Lps Induced Inflammation In Peripheral Blood Mononuclear Cells: Possible Role In Inflammatory Cascade	VITROMIX LAB PVT. LTD., KOCHI	2022	Three Months	Biochemistry
67	Prognostic Significance Of Cytogenic Studies And Pten Mutation Status In Pediatric Acute Lymphoblastic Leukemia	REGIONAL CANCER CENTRE, THIRUVANATHAPURAM	2022	Three Months	Biochemistry
68	Role Of Alpha Tocopherol In The Management Of Oxidative Stress Using Human Erythrocytes Model	JUBILEE CENTRE FOR MEDICAL RESEARCH, THRISSUR	2022	Three Months	Biochemistry
69	EXPRESSIONAL VARIATION OF HOUSEKEEPING GENES-GAPDH, BETA -ACTIN AND 18srna IN HUMAN BLOOD	SCOPFUL BIORESEARCH, KOCHI	2022	Three Months	Biochemistry
70	Inhibition Of Autophagy By Bafilomycin A1 Impairs Mitochondrial Metabolism In Muscle Cells	SREE CHITRA TIRUNAL INSTITUTE FOR MEDICAL SCIENCES & TECHNOLOGY, TRIVANDRUM	2022	Three Months	Biochemistry
71	Cptia Mediated Fatty Acid Oxidation Promotes Metastasis Oral Squamous Cell Carcinoma	REGIONAL CANCER CENTRE, THIRUVANATHAPURAM	2022	Three Months	Biochemistry
72	Investigation Of The Anti-Tumour Efficiency Of Camellia Sinensis Leaf Extract On Mda-T32 Papillary Thyroidcarcinoma Cells	REGIONAL CANCER CENTRE, THIRUVANATHAPURAM	2022	Three Months	Biochemistry
73	Caffeine And Nicotineinduce Tumour In In Vitro Cell Culture And P53 Gene Expression	SCOPFUL BIORESEARCH, KOCHI	2022	Three Months	Biochemistry
74	Analysis Of Lipid Profile Data In Adults For Their Distributions, Gender Differences And Correlations	AMALA INSTITUTE OF MEDICAL SCIENCES, THRISSUR	2022	Three Months	Biochemistry
75	Development Of Manuka Honey Loaded Chitosan- Pva Foam Dressings- A Solution For Advanced Wound Care	SREE CHITRA TIRUNAL INSTITUTE FOR MEDICAL SCIENCES & TECHNOLOGY, TRIVANDRUM	2022	Three Months	Biochemistry
76	Paclitaxel Loaded Seleniumnanoparticle For Colon Cancer Treatment	REGIONAL CANCER CENTRE, THIRUVANATHAPURAM	2022	Three Months	Biochemistry

77	Partial Characterization Of Pyocyanin From Pseudomonas Aeruginosa , And Analysis Of Its Antimicrobial Potency Against Food Pathogens.	Merit Biolab,Palarivattom,Ernakulam	2022	Three Months	Biotechnology
78	Formulation Of Probiotic Health Drinks Using Probiotic Bacteria Isolated From Honeybee, Molecular Characterization And Screening For Various Nutritional Aspects.	Merit Biolab,Palarivattom,Ernakulam	2022	Three Months	Biotechnology
79	Endophytic Bacterial Isolation From Wild Orchids/Vanda And Evaluating Its Potential For IAA/Gibberellic Acid Production In Orchids.	Merit Biolab,Palarivattom,Ernakulam	2022	Three Months	Biotechnology
80	Isolation And Characterization Of Ureolytic Bacteria To Produce Bio Cement.	Merit Biolab,Palarivattom,Ernakulam	2022	Three Months	Biotechnology
81	Extraction And Characterization Of Collagen From Meat Industry By Products/Fish Scale And Preparation Of Moisturizing Skin Ointment.	Merit Biolab,Palarivattom,Ernakulam	2022	Three Months	Biotechnology
82	UTILIZATION OF PINEAPPLE PEEL AND RICE WASHING WATER TO PRODUCE SINGLE CELL PROTEINS USING Saccharomyces Cerevisiae	Merit Biolab,Palarivattom,Ernakulam	2022	Three Months	Biotechnology
83	Isolation And Characterization Of Ureolytic Bacteria To Produce Bio Cement.	Merit Biolab,Palarivattom,Ernakulam	2022	Three Months	Biotechnology
84	Formulation Of Probiotic Health Drinks Using Probiotic Bacteria Isolated From Honeybee, Molecular Characterization And Screening For Various Nutritional Aspects.	Merit Biolab,Palarivattom,Ernakulam	2022	Three Months	Biotechnology
85	Isolation And Characterization Of Ureolytic Bacteria To Produce Bio Cement.	Merit Biolab,Palarivattom,Ernakulam	2022	Three Months	Biotechnology
86	Isolation And Characterization Of Ureolytic Bacteria To Produce Bio Cement.	Merit Biolab,Palarivattom,Ernakulam	2022	Three Months	Biotechnology
87	Partial Characterization Of Pyocyanin From Pseudomonas Aeruginosa , And Analysis Of Its Antimicrobial Potency Against Food Pathogens.	Merit Biolab,Palarivattom,Ernakulam	2022	Three Months	Biotechnology
88	Molecular Characterization Of Endophytic Bacterium From Medicinal Plant And Evaluation Of Its Potential For Beneficial Secondary Metabolite Production	Merit Biolab,Palarivattom,Ernakulam	2022	Three Months	Biotechnology
89	Antibiofilm Activity Of Copper Oxide	Merit	2022	Three	Biotechnology

	Nanoparticle Against Multidrug Resistant Biofilm Forming Bacteria.	Biolab,Palarivattom,Ernakulam		Months	
90	Research	CUSAT, Kochi	2022	9 years	Chemistry
91	M.Sc Project	Indira Gandhi College of Arts and Science, Nellikuzhi(P.O),Kothamangalam)	2022	6 months	Chemistry
92	Research Analysis	Rubber park, valayanchirangara	2022	1 year	Chemistry
93	Flood Inundation Mapping Using SAR Data For Thrissur District	KAU, Thrissur (Aromatic & Medicinal Plants Research station)	2022	4 Months	Environment Studies and Management
94	Research And Training/Cooperation In Education And Research,	Merit Biolabs	2023	2 Years	PG_Microbiology
95	Research And Training/Cooperation In Education And Research,	MG University	2023	5 Years	PG_Microbiology
96	Waste Management	Urban Trash	2023	5 Years	PG_Microbiology

INFRASTRUCTURAL RESOURCES

Infrastructural Facilities Available in the college campus	Total Number
Land Area	18 acres
Built Area	19078 sq.mts
Multi-Purpose Indoor Stadium	1
Seminar Hall (AC)	1
Conference Room (AC)	2
E-Learning Centre (AC)	1
Auditorium (1000 seating capacity)	1
Cooperative Society	1
Classrooms	94
Wi-Fi enabled classrooms	94
ICT enabled classrooms	40
Zoology Museum	1
Laboratories	24
Computer Lab	6
Canteen	1
0Audio Visual Studio	1
Language Lab	1
Sanskrit -Manuscript Library	1
Library	1 (Digital Library facility)
Department Library	13
Incubation Centre	1 (MoU with ASIET, IEDC)
Counselling Centre	1 (2 counsellors including one govt supported)
Cultural Clubs	Cultural Committee, Debate and Oratory Club, Heritage, Drama,

	Film, Music, literary Club, Quiz Club, Renaissance
Mushroom Cultivation facility with expert faculty	1
Botanical Garden	1
Star Garden	1
Butterfly Garden	1
Cafeteria (Cooperative Society)	1
Hostel	1 (Girls)
Rain water Harvesting facility	1 (16,00,000 liters capacity)
Biogas Plant	250 liters of biogas/day
Jumping Pit (200m-5 lane)	1
Table tennis Board	1
Judo Facilities	Judo Hostel 1 (funded by Kerala Sports Council)
Basketball/Volleyball Court	1
Multi-Purpose Play Ground (Football/Cricket)	1
Gymnasium	1
Shooting Centre (NCC)	1
Yoga Centre	Yoga Course (UGC-NSQF Diploma Course)
Ladies Waiting Room	1
Central Circle (space for student activities)	1
Ambulance Service	1

Classrooms Facilities:

94 Wi-Fi enabled classrooms out of which 40 are ICT enabled. All classrooms have Wi-Fi/LAN facilities to make effective teaching-learning processes. Classrooms are well-ventilated, spacious and provided with adequate furniture. All departments have separate faculty rooms and the departments are provided with laptops, desktops and printers.

Laboratory Facilities:

30 laboratories for UG, PG and research programmes. The college houses a good number of major research equipments as listed below:

- Gel Documentation system
- Lyophilizer
- -80° C Freezer
- High Speed Refrigerated Centrifuge
- CO₂ Incubator
- Bio Safety Cabinet (Class 100) (2Nos)
- Research Microscope/ Fluorescent Microscope
- Inverted Microscope
- RF Magnetron Sputtering Unit
- UV-Vis Spectrophotometer
- Keithley source meter
- FT-IR Spectrometer using ATR
- Muffle Furnace
- Incubator
- Microwave Synthesizer
- Ultrasonic Interferometer

Computing and ICT Facilities:

Item	Number
Computers	117
Wi-Fi Hotspot	28
Firewalls	2
ICT Enabled Classrooms	40
Smart Classrooms	1
Campus under CCTV surveillance	DVR/NVR: 8, Camera: 20
LMS Moodle	Linways AMS (LMS), Microsoft Teams, Google Workstation
ICT Usage	High

Computer Labs	6
Routers/Modems	9
Internet Connections	9
Projectors	40
Printers/Scanners	35
Copiers	6
Social Media	Facebook, Twitter, Instagram, YouTube
Academic/Administrative Software	5
Server	2
LCD TV	1
Library	Fully automated (Koha)

Other Academic Facilities:

Separate rooms for cells and clubs like NCC, NSS, Entrepreneurship Development Club, etc. A conference room for IQAC is also facilitated by the college. Separate space is provided for the Examination Cell of the college. Ramp facility, disabled-friendly library, special sanitary facility for the differently abled is also facilitated. Canteen facility for students and staff, water purifiers and coolers in each block, a cafeteria and stationary centre working under the Employee's Credit Cooperative Society, Counselling centre, Girls' hostels, restrooms for staff and girl students, Botanical-garden, Herbal-garden, Zoological Museum, Mushroom cultivation, Generators coupled with KSEB for uninterrupted power generation, and adequate sanitary facilities for students.

- a. Extra-curricular Activities
 - i. Registered Clubs and Cells
 - ii. Other Clubs, Cells and Committees
 - iii. Student Union
 - iv. NSS

Clubs and Committees

Sl. No.	Club/Committee/Cell	Coordinator
1.	Alumni Association	Dr. Anumol K A/Dr. Ratheesh C Nair
2.	Anti-Ragging Cell	Smt. Kavitha Sivadas
3.	Anti-Drugs and Narcotics Cell	Sri. K. P. Suni
4.	Anti-Sexual Harassment Cell	Dr. Preemy P. Thachil
5.	ASAP	Sri. Rajeesh K P
6.	Bhoomitrasena Club/Birds Club International	Dr. Mini KD
7.	Career Guidance and Placement Cell	Dr. Biju Thomas
8.	Cultural Committee	Dr. Sreelakshmi R
9.	Debate/Oratory Club	Dr. G. Vinod
10.	Differently Abled Service Cell	Dr. K. V. Suji
11.	Discipline Committee	Dr. Ratheesh C Nair
12.	Drama Club	Dr. C K Sujeesh
13.	Electoral Literacy Club	Smt. Sreeja G
14.	Entrepreneurship Development Club	Smt. Gopika G
15.	Ethics Committee	Dr. S. Mohan
16.	Film Club	Dr. Rose Mary Palatty
17.	Gender Sensitivity Cell	Dr. Rosemary Palatty
18.	Health And Wellness Club	Dr. Smriti Asokan
19.	Heritage Club	Smt. Kavitha Sivadas
20.	ICC	Dr. Anumol K K
21..	IEDC	Smt. Gopika G.
22.	Institute Innovation Council (IIC)	Dr. Seena Thomas
23.	Internal Examination Committee	Smt. Preemy P. Thachil
24.	IT Cell	Sri Prasad S
25.	Library Committee	Dr. Midhula Soman

26.	Literary Association	Smt. Lakshmipriya
27.	Music Club	Smt. Shreeja Narayanan
28.	NCC	Lt. Rajy Ramakrishnan
29.	NSS	Sri. Anoop V P/Smt. Saumya A P
30.	PTA	Sri. Ben Jos
31.	Quiz Club	Smt. Kairali K K
32.	Red Ribbon Club	Smt. Revathy Babu
33.	Renaissance	Dr. C K Sujeesh
34.	Research Council	Dr. Sumi Mary George
35.	SC/ST/Minority Cell	Smt. Revathy Babu/Sri Rajeesh K P
36.	Science Club	Dr. Gireesh M K
37.	Student Welfare Committee Scholarship	Dr. Biju Thomas Dr Jesitha, Smt. Abhisha
38.	Student's Grievance Redressal Cell	Sri. Ben Jos
39.	Swayam – NPTEL-Coursera Cell	Smt Revathy Babu/Dr Harikrishna Sharma/ Dr. Biju Thomas
40.	Women Cell - Sakhi	Smt. Nimmy Narayanan

VISION

To achieve Excellence in Higher Education, with a stress on Creativity, Competence, Skill Development, Employability and Personal values, Compassion and Social Commitment.

MISSION

1. Professional and Skill Development

- Encouraging Competence, Creativity and Critical Thinking
- Promoting multi-disciplinary Learning and Research
- Promoting enrolment in Skill based Programmes based on current employability demands
- Providing Internships and On Job trainings with reputed industries

2. Employability enhancement

- Keeping up with changing employability demands to equip students to meet new challenges in their potential work field
- Tie-Ups with industries, companies and institutions to keep abreast with the job demands which changes from time to time
- Providing continuous training programmes on soft skills, interpersonal skills, communication skills and professional ethics

3. Personal Integration and Social Responsibility

- Moulding good citizens with ingenuity, adaptability, social commitment and ethical values, who can provide innovative leadership in all walks of life.
- Inculcating mutual respect among individuals to foster Humanity, Social responsibility, Inclusivity and Compassion
- Instil sense of Nationality in order to infuse motivation towards Nation Building and respectful co-existence with co-citizens beyond caste, creed, religion and race.

The institution was raised to the status of a First Grade College in 1956. It is affiliated to the Mahatma Gandhi University and is included under sec.2 (f) and 12 (B) of the UGC act, 1956. The Sree Sankara College Association was formed in July 1954 and in June 1960, the patronage of the college became vested in His Holiness The Jagadguru Sri Sri Sankaracharya Swamigal of Dakshinamnaya. Currently, Sri Sri Bharathi Theertha Mahaswamigal along with Sri Sri Vidhusekhara Bharathi Swamigal, of Sringeri Mutt, steers the administration through a Board of Directors with Sri. K. Anand as the Managing Director.

The institution has established a niche of its own in the generation and dissemination of knowledge and imparting multiple skill enhancement. Students of all class and creed study here and bear ample testimony to the inclusiveness practiced by the institution right from its inception. The institution has always displayed self-reflexivity and a fervour for quality enhancement. Standing on the stepping stones of equity, inclusivity and sustainability, we at Sree Sankara College impart Vidya to the students which kindles an undying intellectual enlightenment, fulfilling our motto that Vidya is the real Amruth, an elixir to all evils and harbinger of all goodness.

The college has done consistently well in Curricular and Cocurricular activities. The National Assessment and Accreditation Council (NAAC), a statutory body of the UGC has accredited the college B++ Grade with 2.80 CGPA in the third cycle of accreditation.

SWOC Analysis

STRENGTH

- ✓ 18 departments offering 31 Programmes, 5 diplomas, 5 certificates, and 29 Add-On Courses
- ✓ Industry certified add on Courses
- ✓ MoUs and Linkages with Industries, Companies and Institutions
- ✓ ASAP MoU
- ✓ Two Foreign MoUs
- ✓ Waste management MoU
- ✓ Highly qualified teaching staff
- ✓ More than 2000 students.
- ✓ The close-knit bonding between students and teachers which helps in identifying, resolving any academic or personal issues faced by the student.
- ✓ Government support schemes, funds and scholarship are available to students.
- ✓ DDU Kaushal Kendra offering vocational programmes
- ✓ DST FIST, SARD, KSCSTE, UGC supported Research Labs
- ✓ Well-equipped Science and Computer labs
- ✓ Government funded Research Projects and Seminar Grants
- ✓ Five University approved research centres
- ✓ Extension activities to promote social responsibility, environmental consciousness, gender equity and human values.
- ✓ WiFi (100 mbps) enabled campus
- ✓ Well-equipped Sports and Games Facility
- ✓ Sports Recognition in National and International Level
 - International
 - National
 - State
 - University

-
- ✓ Recognition for cultural activities.
 - ✓ 6th position in MGU Youth fest
 - ✓ Placement and Career Guidance Cell
 - ✓ Full time Student Counsellor
 - ✓ Green initiatives
 - ✓ Management funded academic events
 - ✓ IIC
 - ✓ Two NSS units
 - ✓ NCC
 - ✓ Different Club activities
 - ✓ Automated library with Digitalisation
 - ✓ New generation programmes
 - ✓ Skill based add-on programmes
 - ✓ High impact research papers, 40 books and chapters, one patent
 - ✓ 18 acres of lush green Campus
 - ✓ Eco-friendly atmosphere that is conducive to the holistic development of students

WEAKNESS

- ✓ A very limited academic autonomy
- ✓ Tight academic schedule
- ✓ Water scarcity during summer time
- ✓ Lack of sufficient building to cater the increasing student strength
- ✓ Shortage of administrative staff
- ✓ Inadequate transportation limits access
- ✓ Lack of sufficient hostel facility

OPPORTUNITIES

- ✓ Proximity to airport and industrial belt
- ✓ High enrolment ratio of students in all programmes

-
- ✓ Experienced faculty members with Ph.D and Post-Doctoral experience.
 - ✓ Substantial potential for expanding its educational activities by bringing about innovations in the sphere of teaching, learning and evaluation.
 - ✓ The potential to upgrade many teaching departments to research centres.
 - ✓ 70 years of imparting quality education to SEBC
 - ✓ 18 acres of space for developmental activities

CHALLENGES

- ✓ No academic flexibility, being an affiliated institute
- ✓ Round the year university examinations, invigilation and evaluation duty for the teachers thereby cutting short the academic days
- ✓ Social, economic and educational backwardness of students, which hinders them from achieving academic excellence.
- ✓ Large number of first-generation learners
- ✓ Youth migrating overseas affecting the enrolment ratio

Curricular Aspects

- Minimum two add-On programmes per department
- More SWAYAM and Coursera admissions – minimum 70% registrations per class
- More MOODLE courses designed by teachers – minimum one per department every year
- Curriculum Workshops and Trainings for teachers on Four-year programmes
- Training to students and teachers on various aspects NEP implementation (ABC, IKS, etc)

Teaching- Learning and Evaluation

- Internal assessment – OBE based internal exams
- NET/GATE based internal exams for PG students
- More focussed student centric learning
- Structured planning to conduct bridge courses in the wake of changing curriculum
- Structured planning for addressing Slow and advanced Learners
- More ICT enabled teaching methodologies – using e-learning facility for PG students
- Structured planning for implementation and evaluation of attainment of COs and POs
- Increasing pass percentage of students by strengthening tutorial and remedial system

Research, Innovations and Extension

- More grants from government and non-government agencies
- Implementation of incentives/awards for departments bringing up grants
- Strengthening of ED Club activities with more industrial linkages
- Promoting Patents from research departments and IEDC activities

-
- Establishing IEDC and enhancing innovations ecosystem, by tie-up with alumni Start -up enablers
 - More awareness programmes on IPR and Entrepreneurship
 - Motivating teachers towards research publications by offering incentives
 - Financial support to teachers for attending conferences/ workshops, etc
 - An interdisciplinary bi-annual journal of the college
 - Extension activities one per department every year
 - Incentives for best extension activity
 - More functional MoUs and linkages with industries

Infrastructure and Learning Resources

- More earmarking in annual budget for infrastructure augmentation
- New building space to accommodate facilities for new curriculum and skill enhancement activities
- Usage of open space for more water conservation facilities and waste management facilities (ground water harvesting, leaf mulching)
- Library facilities augmentation, including an additional floor
- Upliftment and maintenance of sports and games facilities
- Compound wall with barbed wires for the whole campus.
- IT infrastructure Augmentation with more ICT enabled classrooms and smart classrooms
- Attracting more alumni contributions towards infrastructure augmentation

Student Support and Progression

- Designing of more skill enhancement and capacity building programmes and activities
- Strengthening the activities of IIC and IEDC for skill development of students
- Language labs and communication skill enhancement programmes
- Strengthening of placement cell by investing in Placement drives and career guidance programmes
- Coaching for competitive exams as Add-On courses

-
- Structured student grievance cell functioning
 - More investment for supporting arts and sports coaching
 - More involvement of Alumni in the holistic development of the institution

Governance, Leadership and Management

- Strengthening of administrative office by filling up the vacancies
- Structured mechanism for implementation of annual strategic plans
- Strengthening of e-governance system by enhancing office automation system
- Enhancement of staff welfare system by implementing a staff welfare fund
- Establishing financial support for staff to attend professional development programmes
- Establishing incentives for research publications and merits
- Organising training programmes for teaching as well as non-teaching staff in the wake of changing curriculum
- Planned strategy to be ranked within 1-100 NIRF band

Institutional Values and Best Practices

- Planned implementation of various activities at par with the core values of the institution
- Investing more on alternate sources of energy
- Awareness classes for students and staff on sustainable development
- Strengthening of chemical waste management by establishing MoUs with suitable agencies
- More water conservation measures

PROSPECTIVE PLAN

Strategic Development Plan for Sree Sankara College, Kalady - Short Range (2028) and Long Range (2033) Plans

Executive Summary:

This strategic development plan outlines the short-range and long-range goals focuses on achieving NAAC A++ grade, obtaining PM-USHA Grant, securing a top position in the NIRF ranking, and eventually obtaining Deemed-to-be University Status by 2033. The plan encompasses infrastructural, academic, and financial dimensions, addressing the specific objectives laid out for the next five years (2028) and the extended vision for the next decade (2033).

I. Short Range Plans (2028):

1. NAAC A++ Grade:

- Conduct a comprehensive self-assessment aligned with NAAC parameters.
- Implement necessary improvements based on the assessment.
- Ensure rigorous documentation in compliance with accreditation standards.

2. PM-USHA Grant:

- Establish a dedicated committee for grant application.
- Develop a proposal aligning with PM-USHA Grant guidelines.
- Highlight projects that enhance educational access and quality.

3. NIRF Ranking (1-100):

- Enhance academic quality, research output, and student-centric initiatives.
- Strengthen faculty credentials and research publications.
- Upgrade infrastructure to meet the highest standards.

4. Autonomous Institution Status:

-
- Prepare and submit the application for autonomy.
 - Align academic programs with industry needs.
 - Foster an environment of academic freedom and innovation.

5. MOOC Courses for Faculty:

- Encourage faculty to enroll in MOOC courses.
- Incentivize completion and integration of acquired knowledge into curriculum.

6. Welfare Measures:

- Implement service-related travel and educational grants.
- Establish a structured welfare program for staff.
- Monitor and assess the effectiveness of welfare measures.

7. Strengthening Research Activities of Sanskrit Department:

- Create a dedicated Manuscript Library.
- Increase research grants and collaborations.
- Enhance outreach through workshops, seminars, and publications.

8. Facelift of the College:

- Renovate laboratories and upgrade buildings.
- Create a modern and conducive learning environment.

9. 80th Year Celebrations - New Building:

- Develop a project plan for the new building.
- Commence construction activities in alignment with the anniversary celebration.

10. CSR Funds for Infrastructure:

- Identify potential CSR partners.

-
- Develop proposals for infrastructure development projects.
 - Foster long-term relationships with CSR entities.

11. Socially Committed Outreach Programs:

- Develop and implement community engagement initiatives.
- Collaborate with NGOs and government bodies for impactful outreach.

12. Department-Industry Linkages:

- Facilitate collaborations between departments and industries.
- Ensure industry-relevant curriculum and internships.

13. Linkages with National Institutes:

- Establish partnerships with reputed national institutes.
- Facilitate visiting faculty programs for knowledge exchange.

14. Research Centers in Physics, Commerce, and Statistics:

- Allocate resources for state-of-the-art research facilities.
- Encourage faculty to pursue high-impact research.

15. Skill-Based and Employability Programs:

- Introduce skill-based programs across disciplines.
- Align curriculum with industry requirements.

16. Coaching Programs for Competitive Exams:

- Establish coaching programs for national-level exams.
- Appoint qualified trainers and provide necessary resources.

17. Strengthen Career and Placement Cell:

-
- Appoint a dedicated Placement Officer.
 - Foster industry relationships for enhanced placement opportunities.

18. Expansion of Vocational Programs:

- a. Introduce BCA or BSc Computer Science with AI/ML specializations.
- b. Develop more value-added programs (Certificate/Diploma/Add-On).
- c. Implement a bridge course for FYUG programs.
- d. Introduce vocational PG programs or diplomas in Biosciences.
- e. Establish skill centers in association with ASAP, Kerala.

II. Long Range Plans (2033):

1. Deemed-to-be University Status:

- Continue improving academic and research standards.
- Enhance infrastructure and faculty resources.

2. Elevation of all Departments to Research Departments:

- Invest in faculty development and research infrastructure.
- Foster a culture of continuous research and innovation.

3. International Tie-Ups for Exchange Programs:

- Establish partnerships with global institutions.
- Develop exchange programs for students and faculty.

This strategic development plan provides a roadmap to achieve its short-range and long-range objectives, ensuring sustained growth and excellence in academics, research, and infrastructure. The successful implementation of these plans will position the college as a leader in higher education and research. Regular monitoring and adaptive strategies will be crucial to achieving the outlined goals.

ACTION PLAN TO REALIZE STRATEGIC GOALS

The Action Plan is structured around key expansion and upgrading initiatives through SSC Scalar 1 to 5. These initiatives aim to enhance research capabilities, academic programs, faculty development, infrastructure, and sustainability efforts.

I. SSC Scalar 1: Research Excellence and Infrastructure Enhancement

a) Research Infrastructure

- Establish a common instrumentation facility for research departments.
- Invest in cutting-edge equipment and technology to support advanced research.

b) Indexed Research Journals

- Launch an indexed research journal for science streams.
- Establish another indexed research journal dedicated to humanities.

c) Funded Major Research Projects

- Mobilize funds for major research projects.
- Encourage faculty to actively participate in grant applications.

d) Manuscript Library Proposal

- Pursue the establishment of a manuscript library for the Sanskrit Department.
- Propose the creation of an Ayurveda-related Validation Study Centre.

II. SSC Scalar 2: Academic Expansion and Program Diversification

a) Undergraduate Programs

- Introduce UG programs in Malayalam, Political Science, Computer Science, and Biochemistry.

b) Postgraduate Programs

- Introduce PG programs in Biotechnology, Botany, Zoology, and Hindi.

c) Research Centers

Establish research centers in Physics, Chemistry, and English.

d) Diploma/Certificate Programs

- Develop diploma/certificate programs under the National Skill Development Corporation (NSDC).

e) Add-On Programs

- Implement additional add-on programs to enhance the skill set of students.

III. SSC Scalar 3: Faculty Development and ICT Integration**a) E-Learning Initiatives**

- Encourage teacher participation in creating e-learning content.
- Conduct training sessions for teachers on e-learning content preparation.

b) Innovative Teaching Techniques

- Facilitate quality improvement programs led by faculty from national teacher training institutes.

c) Teacher Training

- Provide training for teachers in areas such as student counseling and career guidance.
- Establish links to university libraries for resource-sharing.

IV. SSC Scalar 4: Infrastructure Upgrade**a) Library Complex**

-
- Develop a state-of-the-art library complex with enhanced resources.

b) Examination Hall

- Construct new examination halls to accommodate growing student numbers.

c) Restroom Complex

- Build modern restroom complexes for boys and girls.

d) Multimedia Studio

- Establish a multimedia studio for enhanced teaching and learning experiences.

e) New Block

- Construct a new block to accommodate the introduction of new programs.

V. SSC Scalar 5: Sustainability and Green Initiatives

a) Solar Grid

- Implement a solar grid for sustainable energy sources.

b) Energy Efficiency

- Transition to energy-efficient devices across the institution.

c) Green Mission

- Collaborate with NGOs for effective disposal of bio-degradable waste, liquid waste, and e-waste.

This Institutional Development Plan outlines a comprehensive roadmap for [Institution Name] to achieve its goals of research excellence, academic expansion, faculty development, infrastructure enhancement, and sustainability. Regular assessment and adaptation of strategies will be crucial for successful implementation. The collaborative efforts of the institution's stakeholders will be pivotal in realizing these ambitious goals.

DETAILED DESCRIPTION OF GOALS



RESEARCH, INNOVATION AND ENTREPRENEURSHIP

I. INCUBATION & TECHNOLOGY CENTRES

1. Title of Project

Establishment of Incubation and Technology Development centres

2. Specific Area

Field	Sub-field
Interdisciplinary	<ul style="list-style-type: none">• Nanotechnology Lab (1)• Energy Centre (2)• Microbiology lab (3)• Women collective 'green start-up' (4)• Waste management start-up (5)• Biofuel (5a)/plastic waste conversion(5b)/food waste conversion (5c)• Green House (6)• Interdisciplinary prototype gallery and innovation centre (7)• Self-Powered incubation Centres (8, for 1-7)

3. Summary of Project

Objectives	<ul style="list-style-type: none">✓ Infrastructure development for incubation centres (1 to 7)✓ Make available sophisticated scientific and technological instruments for nearby active enthusiastic researchers. (1, 2, 3)✓ How basic amenities (such sanitary napkins from biodegradable components) can be made available to socially backward people in a cost effective and greener way with a long-term vision. (4)✓ With over 2100 students and 200 staff, waste management should be a huge concern. With introduction of bio-incubation centres running by the technology developed by microbiology dept. could not only solve problem but also can be a source for fund raising, job opportunities, prototype development. (5a-c)
-------------------	--

Objectives	<ul style="list-style-type: none"> ✓ Creating a greenhouse facility for various plant products coordinating student volunteers, people from locality and other student's organizations (NSS, NCC, Bhoomithrasena club <i>etc.</i>) (6) ✓ Academia and industrial connecting and technology transfer are crucial for both parties. Developing a prototype centre displaying the innovative ideas of students, research fellows & faculties facilitate easy transfer of high-end technology for product development. (7) ✓ Enabling solar energy converting facility will be sufficient to power up the basic amenities for the whole centre. (8 for 1-7) ✓ Commercialize the prototype, product developed and technology transfer in the interdisciplinary centre (co-ordinating all the above section)
Expected Outcome	<ul style="list-style-type: none"> ✓ Self-powered (solar) central interdisciplinary facilities – incubation centres. ✓ Product development centres – bio-fuel production, bio-sanitary napkin unit, plastic waste pellets for industrial usage (tarpaulin making, road tar making <i>etc.</i>), efficient plant nursery. ✓ Technology transfer centre where innovative ideas can be easily link up with industry.

EXTENSION ACTIVITIES THROUGH DIGITALISATION

Title of the Project Sree Sankara Center for Skill Development	
Project Description	
Need	<p>By introducing innovative courses tailored to address local needs and marginalized groups, we can forge stronger ties between industry and the community. We firmly believe that education and skills development are powerful tools for social inclusion and individual empowerment. With the support of your esteemed foundation, we can make significant progress towards a more equitable and prosperous society.</p> <ul style="list-style-type: none"> ✓ Bridging the gap between academia and industry ✓ Enhancing employability ✓ Promoting lifelong learning ✓ Fostering entrepreneurship and innovation ✓ Addressing industry-specific challenges ✓ Empowering underserved communities ✓ Continuous professional development for faculty and staff <p>In summary, a skill development Centre in a college is essential to bridge the gap between academia and industry, enhance employability, foster entrepreneurship and innovation, address industry-specific challenges, empower underserved communities, and provide continuous professional development opportunities for faculty and staff. It plays a crucial role in preparing individuals for successful careers and a rapidly changing job market.</p>

Project Objectives	<p>Our project aims to achieve the following key objectives:</p> <p>a) Develop course content: The college will collaborate with industry experts to design and develop Skill development courses that align with the needs of local communities and marginalized groups, students in India and abroad. These courses will emphasize practical skills, industry-relevant training, and real-world applicability.</p> <p>b) Training and facilitation: The Centre proposes to recruit qualified instructors with expertise in the relevant fields and provide them with specialized training on engaging diverse learners, catering to unique needs, and fostering an inclusive learning environment.</p> <p>c) Accessible resources: We will invest in the infrastructure and technology necessary to ensure accessibility for individuals with disabilities. Additionally, we will provide necessary resources such as textbooks, equipment, and software to support effective learning.</p> <p>d) Partnerships with industry: We will forge partnerships with local businesses, professional associations, and industry leaders to provide our learners with industry exposure, internship opportunities, and mentorship programs. This will enable them to build relevant networks and enhance their employability prospects.</p>
Target Beneficiaries	
Age	18 – 30 years
Eligibility Criteria	Matric Passed Disability Certificate Willingness to Work
Location	KERALA
Target Audience	Students (India & Abroad) Marginalized local public

DETAILS OF THE PROJECT

Need-Based Assessment	
Rationale behind selecting the project	<p>A Centre for Skill Development course (CSD) is an essential addition to any educational institution's offerings due to the following reasons:</p> <ol style="list-style-type: none">1. Relevance to the job market: The courses under the centre is designed so as to provide job-oriented training, equipping students with practical skills that are in high demand in the job market.2. Improved Employability: Employers are constantly seeking employees who have practical knowledge and experience. Skill development courses under this centre proposes to offer students' knowledge, skills, and hands-on practice of specific tasks or procedures that make them more desirable to potential employers.3. Meeting Industry Standards: Various industries have specific standards and requirements that need to be met. The Centre is developed after extensive research on the specific industry requirements and equips the students with the knowledge, skills, and experience required to meet such standards.4. Addressing Skills Shortage: There is a general shortage of skilled personnel in many industries. The centre helps address this shortage while providing students with a lucrative career pathway.5. Entrepreneurship Development: The Centre provides students with valuable knowledge and skills that can be leveraged to start their ventures, thus empowering students in becoming job creators rather than job seekers.6. Continuous Professional Development: The Centre provides courses of multidisciplinary nature designed to provide continuing education and professional development opportunities to learners and professionals alike. As such, those who have already completed a bachelor's or master's degree course can enroll in these courses to acquire new skills and knowledge, maintain professional competencies and stay competitive in the job market. <p>In conclusion, the establishment of a Centre for Skill Development course in a college is essential to provide students with essential</p>

	hands-on experiences, meet industry standards, address skills shortages, foster entrepreneurship, and promote continuous professional development for learners and professionals.
Rationale behind selecting the location	Upon conducting the demographic assessment, we found that this particular area has fairly large number of unattended marginalized population and majority of them are unemployed. Moreover majority of the students of Sree Sankara College belong to the marginalized category. Thus, this location provides ample scope of creating a change and making a difference in the lives of our beneficiary groups.

Skill Development Courses provided under the centre

Phase	Activities
I	Course Development and Design
II	Recruitment and Training of Instructors
III	Infrastructure Development and Resource Acquisition
IV	Course Delivery and Industry Partnerships

Extension courses using Digital Platform initiatives

SL. NO.	COURSE NAME	DEPARTMENT	TARGET GROUP	NATURE OF THE COURSE	COLLABORATION
1	Diploma in Health & Wellness (DHW)	Department of Commerce	International Students, Employees of MNCs, PWD Category	Advanced Diploma	Department of Ayurveda, Sree Sankaracharya University of Sanskrit
2	Mindfulness Based Stress Reduction (MBSR)	Counselling Cell	Employees of MNCs, People with Chronic illness.	Advanced Diploma	Indian Association of Clinical Psychologists: IACP
3	Producing and Perceiving Sounds: English for Careers (PPSEC)	Department of English	Graduate Students, Higher Secondary Level Students	Diploma	UC College Aluva, Ernakulam (Affiliated College of MG Univeraity)
4	Hindi Computing (HC)	Department of Hindi	Local School Students, Graduates and General Public	Certification	NA
5	Integrated Diploma on Kalari and Yoga	Department of Sanskrit	Local School and College Students,	Advance Diploma	Rishi Gurukulam, Koovappady, Perumb

	(IDKY)		General Public		avoor
6	Conservation, Preservation and Critical editing of Manuscripts (CPCEM)	Department of Sanskrit	International Students, General Public	Certification	Swadhyaya Research Foundation
7	Personal Finance Management (PFM)	Department of Economics	Casual Labours including migrant workers, General Public	Diploma	Kerala Economic Association, Kerala
8	Data Science, Analytics & AI for Business & the Real World (DSAAIBRW)	Department of Statistics	Professionals, Graduate Students	Advanced Diploma	The Kerala Statistical Association, Kerala
9	Applied Energy Materials (AEM)	Department of Chemistry	Graduate and Post-graduate students, Research fellows, Research Oriented faculty members	Advanced Diploma	IIT, Palakkad
10	Economic Zoology (EZ)	Department of Zoology	Professionals, Graduate Students	Advanced Diploma	Central Sericulture Research and Training Institute, Mysore
11	Thin Film and Nano Particles : Synthesis and Characterisation (TFNPSC)	Department of Physics	Professionals, Graduate Students	Advanced Diploma	Universiad Autonoma de Neuvo Leon, Mexico
12	Marketing Essentials for Women Entrepreneurs (MEWE)	Department of Commerce	Women Entrepreneurs, Women SHGs, Women under Person With Disabilities category	Advanced Diploma	Kudumbashree Mission, Kerala
13	Mushroom Cultivation (MC)	Department of Biotechnology	Farmers, Unemployed Employed youth, Weaker Sections of the society, Students etc	Advanced Diploma	Directorate of Extension, Kerala Agricultural University
14	Banana Fibre Extraction and Production (BFEP)	Department of Botany	Farmers, Unemployed Employed youth, Weaker Sections of the society, Students etc	Advanced Diploma	Na
15	Introduction to Indian Art and Architecture- A Historical Overview (IIAA)	Department of History	General Public.	Diploma	Marthoma College, Enakulam (Affiliated College of Mahatma Gandhi University
16	VEDIC MATHAMATICS (VM)	Department of Mathematics	UG and PG Students	Diploma	NA
17	Transcriptomics and Metabolomics: A Road Map to Comprehensive Molecular Insights (TMCMI)	Department of Biochemistry	Biologists, Chemists, Bioinformaticians and Clinicians	Diploma	Department of Biotechnology, CUSAT and OmicsGen Pvt.
18	Energy & Water Conservation	Department of Zoology	School and College Students	Certification	NA

	Strategies (EWCS)				
19	Organic Waste Management and Environmental Sustainability (OWMES)	Department of Microbiology	Waste generators, Local government representatives, Waste managers and waste management practitioners, Officials from state, urban and local bodies, Academics, consultants and students, NGO/civil society and private companies, Volunteers aspiring to work and contribute to the SWM sector	Diploma	Local Governance

INSTITUTIONAL PROJECT BUDGET

A. Existing Land Availability (in acres): **18 acres**

B. GPS Coordinates of the college: **10.179943639212391, 76.42983673227653**

PROPOSAL NEW BUILDING

Sl. No	Description of Infrastructure	Purpose of Infrastructure	Proposed Area Sq. m	Total Cost per Sq. m	Total cost	Justification
1	Main Building	The proposed building epitomizes the transformative vision of the National Education Policy 2020 by fostering an innovative ecosystem that seamlessly integrates cutting-edge research, experiential learning, and interdisciplinary collaboration to empower students for the challenges of the future.	2044	14678	3000000	From 2023-24 onwards, the institution is commencing Four Year UG Programmes (FYUGP) in alignment with NEP2020 and the existing building infrastructure is insufficient for accommodating another year of study.
1.1	Seminar & Conference Hall	Enhances collaborative learning and knowledge dissemination, aligning with the National Education Policy 2020's emphasis on interactive and participatory teaching and learning methodologies. Proposed Seminar & Conference Hall will facilitate academic discussions, presentations, deliberations and events	All included in Main building		3000000	The cost includes state-of-the-art audio-visual equipment, acoustics, and seating arrangements suitable for hosting academic conferences and seminars, providing a conducive environment for knowledge dissemination.

1.2	Central Laboratory for Multidisciplinary Research facility	<p>Promotes interdisciplinary collaboration, fostering innovation and meeting the NEP 2020's vision of a flexible and integrated education system</p> <p>To support diverse research initiatives across disciplines</p>	All included in Main building		5000000	The budget accounts for specialized equipment, advanced technology, and infrastructure necessary to facilitate cutting-edge research across multiple disciplines, fostering interdisciplinary and multidisciplinary innovations and collaboration.
1.3	Facilities for PG and Research Classrooms	<p>Ensures a conducive learning environment, aligning with NEP 2020's focus on research-oriented education and quality infrastructure for higher education.</p> <p>To provide dedicated spaces for postgraduate classes and research activities</p>	All included in Main building		300000	The allocation covers basic furnishing of rooms equipped with necessary audio-visual amenities to support the academic pursuits of postgraduate students and research scholars.
1.4	Smart rooms for Industrial training and skill development etc.	<p>Integrates modern teaching methods, aligning with NEP 2020's emphasis on skill development and the use of technology in education.</p> <p>To facilitate interactive and technology-driven training programs for industrial skills</p>	All included in Main building		500000	The funds are designated for integrating modern technology and interactive tools into the classrooms, promoting effective industrial training and skill development programs.
1.5	Manuscript conservation and digitisation centre	Aligns with NEP 2020's goal of preserving and promoting cultural and scientific heritage, fostering a sense of identity and heritage among students.	All included in Main building		1000000	The proposed budget supports the creation of a specialized facility with controlled environments and

		To preserve and protect ancient cultural heritage in the form of palm leaf manuscripts and encourage research in IKS sector				preservation methods to ensure the long-term conservation and digitisation of valuable ancient palm leaf manuscripts. The centre is envisaged as a step towards promotion of Indian Knowledge System.
1.6	Yoga and Wellness training Centre	<p>Supports holistic development, in line with NEP 2020's holistic and multidisciplinary approach to education, emphasizing the importance of physical and mental health in the learning process.</p> <p>To promote physical and mental well-being through yoga and wellness programs</p>	All included in Main building		200000	<p>The cost is justified by the need for creating a dedicated space equipped with appropriate flooring and props to promote physical and mental well-being through yoga and wellness training programs, as part of promotion of Indian Knowledge System. The dept of Sanskrit offers UGC-NSQF Diploma Programme in Yoga Instructor, which can support the centre.</p>

1.7	Digi Lab	<p>The digital laboratory contributes to the integration of technology in education, fostering digital literacy and preparing students for the evolving technological landscape, in line with the objectives of the NEP 2020</p> <p>To provide a technologically advanced space for digital research, experimentation, and learning through multidisciplinary approach</p>	All included in Main building	NA	300000 0	The institute lacks adequate IT infrastructure in the wake of new Add-On and other skill based programmes. The expenses are allocated for advanced computing equipment, software, and infrastructure required to establish a modern digital laboratory, fostering research and innovation in digital technologies.
2	Equipments for UG labs				150000 0	In the wake of implementation of Four Year UG programmes, the laboratories need upgradation and upliftment of existing lab facilities. The budget is intended for the purchase of essential laboratory equipment, ensuring that undergraduate students have access to up-to-date tools for hands-on learning and practical skill development in their respective fields.

LIBRARY RENOVATION PROPOSAL

“The library is a growing organism”

The fifth law of library science states that Library building needs to be organized considering future developments and it should accommodate all its users without any barriers.

According to NAAC guidelines; libraries are considered Learning resource centers that support the research and academic activities of the institution. Considering the importance of libraries in higher education and research, the Bureau of Indian Standards(BIS) came out with the Indian standard 1553-1960 code of practice relating to primary elements in the design of library buildings based on the recommendations of the Sectional committee chaired by Dr. S.R. Ranganathan, who is honored as the Father of Indian Library Science.

For a city central library with a collection range of 50,000-3,00,000 books, the Indian standard suggests 100- 1000 reader seats. At present Sree Sankara College, the library has a collection of books above 55000 with a reader’s seating capacity of 64 seats only.

Current Scenario

- Total staff and students = 1800-2000
- Library book collection = 55000
- Periodicals, newspapers, magazines =55
- Online services= OPAC, NLIST, Database searching etc.
- Per day usage statistics= 150-250 users
- Per month usage statistics = 2200 users (January-march 2022)
- Present Seating capacity = 64 seats
- Number of computers =7

The **Bureau of Indian Standards(BIS)** suggests the following recommendations while space planning a library building.

- Functions of the library building
- Principles of planning the library building
- Location and Inter standards of the library building
- Dimensions of different rooms and facilities
- Relative positions of different areas
- Compact shelving
- Multitier shelving
- Facilities for differently-abled & fire safeguards.

Based on the norms and regulations by UGC and the Bureau of Indian Standards, it is proposed to remodel the existing library building. The functional design of library buildings, fittings, and furniture ensures efficient service. The goal of the renovation is to improve the functionality of user service points, the overall comfort and general appearance of the Library, and update staff and student areas to incorporate current advances in technology.

For the effective technical operations of the library., to provide the provision of quiet, comfortable, and attractive areas for study, to provide the provision of individual and collective studies for the users doing intensive research work, to provide facilities to develop the reading habit, to create the provision to facilitate the contact of users with the contents of the library, for the storage and preservation of reading materials, to save the time of the reader and to provide accessibility of information using IT infrastructure, the Library Advisory Committee proposes to remodel the existing library considering the following requirements.

Requirements

1. Space to include more book racks

Purpose: At present, there is no space to accommodate new racks, and almost all the racks are filled with books. Books cannot be kept in particular racks due to the shortage of space. So more racks are required. Space between racks needs to be designed in such a way that a wheelchair can move without barriers.

The width of the gangway between 2 rows of racks should be 4.5 feet. The nearest rack should be 3 feet away from the wall so that unexpected rainwater and direct sun rays do not damage books. Each unit book rack (2 metres) long may be assumed to house 700-750 volumes. 1 sq. metre of stack room houses about 150 volumes.

For less used materials compact shelving is recommended to save space. Center- to center distance between consecutive racks is 1.80 metres. The distance from the end wall of the stack room to the center of the nearest row of a rack is 1.55 metre.

Audience: Users of the library

Requirement: Rearrangement and addition of more shelves.

2. Reading room to accommodate 15 % of total students-staff strength.

UGC (India) has recommended the following size of a reading room for University and College libraries in India:-

Length – $1.5 \times (n)$ meter (excluding the control region). Here n is the number of rows of reading tables. Usually, the size of the reading table is 2×70 m.

The centre to centre distance between two consecutive rows of the reading room tables is 1.5 m with seating arrangement on one side of the table only.

Width – 5m (Based on two tables each 2m long plus central gangway one meter wide); or 7.5m (Based on three tables each 2m long plus central gangway 1.5 meter wide); or 10m (Based on four tables each 2m long plus central gangway 2 meter wide)

The height- The standard height for these areas is 7 and a half.

Purpose: To provide a seating facility for all the library users. Reading rooms need to be divided into general reading areas for newspapers, magazines, reference areas, and stack areas. To prevent

physical deterioration of reading materials and to provide comfortable study area air conditioning is recommended.

Audience: 100-200 students at a time.

Requirement: Chairs and tables. The average area per reader in the reading room is 2.33 sq. mtr. The size of the reading table is 2.4 metre x 0.6 metre. The centre to center distance between 2 consecutive rows of the reading table is 1.8 metres.



3. Separate space for computers and IT facilities.

Purpose: The library is providing e-resources and has institutional repositories. Library users have access to a wide variety of electronic resources (online repositories, online databases, e-journal sites, etc.) in the E-Library. At present, there are only 7 computers which is insufficient in number while considering the library usage. In the present library, computers are not kept in air-conditioned rooms, which is a cause of system damage due to dust. A separate air-conditioned space will break down the maintenance cost.

Audience: 15-25 students at a time

Requirement: More computers and seating facility. A separate cabin is required to provide services for differently-abled. Air-conditioned computer room with internet facility.



4. Research Carrel

Purpose: A separate space particularly for researchers and faculties for their research work far away from the main entrance and issue counter. Nowadays researchers are given separate areas in all libraries for their research activities, a private space for faculty and research scholars.

According to UGC (India)(1965)space recommended for research, the cubicle is 20 sq. ft.

Audience: Researchers

Requirement: A cubicle with Chairs and tables



5. Space for Manuscript Archives

Purpose: To make a collection and archives of rare manuscripts (palm leaf -scripts) in Sanskrit language library needs a separate conservation space. This is aimed to preserve the manuscripts from deterioration.

Requirements: Cupboards to keep the Manuscripts, Books. Air-conditioned room- to keep the manuscripts clean

6. Space for the human library

Purpose: Human library is a concept where experts have opted to speak about their experiences openly to an interested audience and answer any questions they are asked.

Audience: 5-10 users at a time

Requirement: table with chairs



7. Space for conferences and seminars, library orientation programs, and workshops.

Purpose: Every year library needs to provide an orientation program for the fresher's (First year UG & PG students). For that, a particular space inside the library is required. Also to conduct seminars and workshops, and library committee meetings library needs a conference room.

Audience: 30-40 persons at a time

Requirements: Chairs, Conference table, Computer, and Internet facility, Projector



8. Digitization Room

Purpose:

The library houses a rich and rare collection of Sanskrit books which requires preservation. To preserve the rare collection and to provide it to library users, digitization is essential. The major purposes of digitalization are: to restore damaged books and manuscript, to enhance access and improve preservation of library materials.

Requirement: A room for digitization process, digitization equipment's- Computer, digitization software & hardware equipment's, external hard disk to store the digitized data.

9. Space for video cassette/CD room, audio recording

Purpose: The library is producing audiobooks with help of library club volunteers. At present recording is conducted in any free classrooms. So the recording can be conducted only based on the availability of classrooms.

Audience- 2-3 students at a time

Requirement: A small closed room, air-conditioned.

10. Property counter

Purpose: AT present, the property counter contains only 8 tracks, which is insufficient Property counter/racks that can accommodate 50-100 students at a time are required.

Audience: above 100 students.

Requirement: Property counter

11. Photocopying area

12. Storeroom :

Purpose: The library needs a storeroom to keep the weeded out/ damaged books, old magazines, old newspapers, etc.

Requirement: A small room with shelves to store books

13. Circulation area

The circulation counter is the focal point of the library. The location of the circulation counter should be near the entrance and stack. Adequate space is required near this counter for the free movement of readers. At the counter some space has to be provided to separate it from the

reading area, otherwise, readers will be disturbed and this space may be utilized for exhibition display and public catalog, etc.

14. Space for the reference section

The reference section needs to be separated from the stack area and it is to be treated as a separate section. At present reference racks are kept along with the stack area.

According to the norms by UGC, it is suggested 100 seats are adequate for a reference room in an academic library except in the case where it is expected to be used for another purpose as well.

15. Signage System

Purpose: It is essential to make the users aware of the library shelf details, subject heading, list of services, etc. For that proper signage need to be displayed on boards, which are visible to all users.

Audience: Library users

Requirement: Display Boards

16. Change of library name; to Library & Information Centre/ Learning Resource Centre/ Library & Knowledge Centre

Purpose: Nowadays, libraries are treated as reading centers and as knowledge & information centers. Library & Information Centre/ Learning resource Centre/ library & Knowledge Centre: if any of these names are used, it is understood that the library is providing research assistance.

Audience: Library users

Reference: <https://www.libraryplanning.in/>

<https://law.resource.org/pub/in/bis/S03/is.1553.1989.pdf>

Suggestions

It is noted that there are free classrooms available above the library building. If that free space can be included in the library section, it will provide ample space to accommodate the above requirements. Thus the present difficulties can be rectified.

The Library Advisory Committee requests the management to consider the library requirements and do the needful as early as possible.

Proposal for Working Women's Hostel (WWH)

We submit this proposal to the Ministry of Women and Child Development (MWCD) seeking support for the establishment of a Working Women's Hostel (WWH) at Sree Sankara College, Kalady, located in Mattoor village, Kalady Grama Panchayat, Ernakulam District, Kerala. This initiative aims to address the housing needs of working women within the campus, providing a secure and supportive environment for their residence. Recognizing the unique challenges faced by working women in rural areas, this initiative aims to provide safe and conducive accommodation to empower women pursuing education and employment opportunities.

Objectives

The primary objectives of establishing a Working Women's Hostel at Sree Sankara College, Kalady are as follows:

- **Empowering Working Women**
To empower women by providing safe and comfortable accommodation, supporting their personal and professional pursuits
- **Addressing Rural Challenges**
To address the specific challenges faced by working women in rural settings, such as limited accommodation options and safety concerns.
- **Facilitating Education and Employment**
To eliminate barriers to education and employment for women in rural communities by offering secure living options.
- **Promoting Inclusivity:**
To foster inclusivity by addressing the unique accommodation needs of female employees and students within the campus.
- **Aligning with MWCD Initiatives:**
To align with the initiatives of the Ministry of Women and Child Development in promoting the well-being of women

Rationale:

The establishment of a Working Women's Hostel is crucial due to the following reasons:

- **Supporting Career Growth**
Working women often face challenges in finding suitable accommodation near their workplace or educational institution, hindering their career growth.
- **Ensuring Safety and Well-being:**
A dedicated hostel within the campus will ensure the safety and well-being of female employees and students.

Facilities and Services:

The proposed Working Women's Hostel will encompass the following facilities and services:

- 1. Accommodation:
 - Well-furnished rooms with single and shared occupancy options.
 - Adequate bathroom facilities with 24/7 hot water supply.
- 2. Common Areas:
 - Spacious common areas for social interactions, relaxation, and recreation.
 - Study rooms equipped with necessary amenities to support academic pursuits.
- 3. Dining and Kitchen Facilities:
 - A well-maintained dining area offering nutritious and hygienic meals.
 - Kitchen facilities for residents who prefer to prepare their own meals.
- 4. Security Measures:
 - 24/7 security personnel and advanced surveillance systems.
 - Secure entry and exit points with access control.
- 5. Health and Well-being:
 - Collaboration with local healthcare providers for medical assistance.
 - Provision of wellness programs, fitness facilities, and recreational activities.

Working Women's Hostel (WWH)

Working Women's Hostel (WWH) for **100 Women** involves considering various factors such as construction costs, operational expenses, furniture and fittings, staffing, security measures, and contingency provisions. The figures provided here are sample estimates, and actual costs may vary based on specific requirements, location, and standards of the hostel.

Construction and Setup:

Building Construction:

Construction costs	: ₹2,000 per square foot
Total construction cost for 25,000 square feet (approximate)	: ₹50,000,000

Furniture and Fittings:

Beds, wardrobes, desks, chairs, etc.	: ₹15,000 per room
Total furniture cost for 100 rooms	: ₹1,500,000

Common Area Setup:

Lounge, study rooms, dining area, kitchen setup	: ₹30,000 per square foot
Total common area setup cost	: ₹3,000,000

Security Systems:

Surveillance cameras, access control	: ₹1,000,000
Total security setup cost	: ₹1,000,000

Contingency and Miscellaneous:

Contingency Provision:

5% of the total budget for unforeseen expenses	: ₹4,925,000
--	--------------

Miscellaneous:

Additional provisions for unforeseen expenses or improvements	: ₹2,500,000
Total miscellaneous cost	: ₹2,500,000

Grand Total:

The grand total budget estimate for establishing and operating a Working Women's Hostel for 100 students in Kerala is the sum of all the above costs.

Grand Total Budget Estimate =

₹50,000,000+ ₹1,500,000+₹3,000,000+ ₹1,000,000 + ₹4,925,000+₹2,500,000

Grand Total Budget Estimate **₹ 6,29,25,000/-**

General Renovation Requirements in Plan

I. General Infrastructure Requirements

1. All science lab Maintenance (proposal submitted to Management already – copy attached)
2. Name of college near Gate – details for inscription attached (embossing preferred to Steelletters)
3. Adi Shankara Statue Installation near to College Gate – preferably opposite to main gate,facing the gate
4. Vision and Mission Boards at:
 - a. Main Block
 - b. S Block

-
- c. Commerce Block
 - d. SF Block
 - e. Microbiology Block
 - 5. Mandatory Cells Info at all Blocks: (Antiragging cell, anti-sexual Harassment Cell, GrievanceCell)
 - a. Main Block
 - b. S Block
 - c. Commerce Block
 - d. SF Block
 - e. Microbiology Block
 - 6. Boards in departments – already arranged, data collection in completionphase
 - a. Faculty names (retired and serving)
 - b. programme offered
 - c. Roll of Honour
 - 7. Boards aside pathway: model given here (all with regn no.s)
 - a. NCC, NSS, Bhoomitrasena Club, Birds Club International
 - b. KSWDC, ED Club, IIC, IEDC, Red Ribbon Club
 - 8. Abdul Kalam Pavilion – in commemoration of the visit of Sri. APJ Abdul Kalam
 - 9. Classrooms
 - a. Black board maintenance or Green Board
 - b. Smart Board in all final year UG and all PG classes
 - c. Maintenance of windows/doors
 - d. Public address system in all classes and staff rooms
 - 10. Seminar Hall
 - a. Stage rearrangement
 - b. Bigger screen placed in such a way that visibility is not blocked by the stage
 - c. Permanent holder for placing banner
 - d. Chairs to be replaced
 - 11. Cooperative Society extension
 - a. Books and stationary counter
 - b. Coffee counter
 - c. Xerox counter
 - 12. T-Block Corridor
 - a. History of the college with milestones, famous Alumni, achievements
 - b. LED Lightings

13. Gardens (medicinal, butterfly, star, organic)
 - a. Boards and boundaries
 - b. Cleaning
14. Wiring of all blocks to be checked and re-wired if needed
15. Principal's room – modification
 - a. Waiting lobby out of Principal's office to avoid barging in of visitors and students
 - b. Shelves for keeping awards and trophies
 - c. Flooring and other interior work
16. Cupboards with glass doors for keeping files, to all departments
17. Replacing damaged chairs in departments wherever needed
18. Research room and MSS library to Dept of Sanskrit (separate proposal attached)
19. Waste management system – segregated bins – for each block
20. Mini Seminar Hall – with AC, Smart board and projector facilities
21. Separation of cabins for Club/Cell offices – top of auditorium
22. LCD projectors wherever required (Statistics) – can be arranged with accumulated PD fund
23. Biogas plant – repair
24. Rain Water harvesting maintenance and board
25. Ground water harvesting
26. Leaf mulching – are identified
27. Modification of IQAC room –
 - a. Almirah and blinds
 - b. Wiring (socket for connecting Projector)
28. Tarring of road from College Gate till Indoor Stadium
29. Clearing of bushes
30. Total Painting work.

II. LAB REQUIREMENTS

1. Department of Zoology

1. Moisture-proof wooden or metal cupboard with a dehumidifier.
2. The Rain-proofing of walls of Room G29
3. Replacing of Gas pipeline with leakproof copper pipe
4. Concrete slab with porcelain tiles for keeping the Bunsen burners

5. Projector stand
6. Termite proofing and repair the Doors and cupboards of the Lab, classroom and Staff room

It will be very kind of you if you could kindly arrange to get the above repair works done in the department which would help improve the functioning and ambiance for the students.

2. Department of Microbiology (SF)

The laboratories of Self-Financing Microbiology Core and Complimentary Laboratory department need a few urgent maintenances as well as infrastructural requirements, as listed below. Kindly take immediate steps to address these needs for the smooth functioning of the lab sessions and hassle-free conduct of examinations.

Microbiology Core Lab

1. Leakage of tap
2. Sink blockage
3. Termite attack in the cupboards for storage of utensils
4. Few plug points are not working
5. Bunsen Burner maintenance- some are not working and some are leaking.
6. Air conditioner

Microbiology

Complimentary Lab

- 1 Blockage of sink in the wash area
- 2 Clamp for one cupboard
- 3 Few plug points are not working
- 4 Termite attack in the cupboards for storage of utensils
- 5 Bunsen Burner maintenance- some are not working and some are leaking
- 6 Air conditioner

3. Department of Chemistry

We, the chemistry department have a humble request for the renovation of chemistry labs in Sree Sankara College, Kalady. Some of the essential requirements highlighted in our lab are,

- ☐ Chemical resistant and termite proof painting of Benches and Work surfaces
- ☐ All sinks need to be replaced with good quality ones
- ☐ Emergency Eyewashes and Showers in all labs

- ☐ Replace all taps and pipe connections
- ☐ Introduce a common waste disposal system
- ☐ Proper ventilation and exhaust fan facilities
- ☐ Maintenance of all broken windows and water leaking roofs
- ☐ Maintenance of cupboards under table
- ☐ Maintenance and Termite proof painting in all side shelves
- ☐ Bathroom attached rest room

4. Department of Physics

The laboratories of Physics department need a few urgent maintenances as well as infrastructural requirements, as listed below. Kindly take immediate steps to address these needs for the smooth functioning of the lab sessions and hassle-free conduct of examinations.

1. BSc Lab
 - a. Painting of Lab tables
 - b. Maintenance of Wiring and plugs on Lab tables
 - c. Voltage Stabilizer
2. BSc Computer Lab
 - a. New Computer Tables needed – 15 numbers
 - b. AC for computer room
 - c. Glass door
 - d. Centralised UPS
3. MSc General Lab
 - a. Painting of Tables
 - b. Maintenance of Wiring and plugs on Lab tables
 - c. Voltage Stabilizer
 - d. Maintenance of Side cupboards
 - e. Repair of door – termite
 - f. Maintenance of wash area
 - g. Dark room facility
4. MSc Electronics Lab
 - a. Painting of Tables
 - b. Maintenance of Wiring and plugs on Lab tables
 - c. Voltage Stabilizer – connection needed to all tables
 - d. Maintenance of Side cupboards
5. Project Lab
 - a. Repair - replacement of windows
 - b. Repair of leaking walls
 - c. Repair of door – termite
 - d. Painting of walls

5. B.Voc Renewable Energy Lab

Equipments List for Maintenance

- ☐ Solar Flat Plate Collector
- ☐ Evacuated Tube Collector
- ☐ Solar Air Heater
- ☐ Solar Still
- ☐ Parabolic Trough Collector
- ☐ Solar Panels

6. COMPUTER LAB REQUIREMENTS

Lab Requirements - November 2022				Date	10.11.2022
Sl. No.	Lab	Requirements	Purchase/Service	Quantity	Remarks
1	Computer Lab - DST- FIST	Replace HDD with 120GB SSD	Purchase	15	1 PC not working due to HDD failure
2		Motherboard service	Service/Purchase	2	Board failure
3		Printer port service	Service	1	Connectivity issue - HP M1136 MFP
4		USB Mouse	Purchase	2	
5		USB Keyboard	Purchase	1	
6		Computer Table	Purchase	1	Replace normal table
7		Rolling chair without arm rest	_____	4	Theres only 12 chair for 15 machines
		Tress work over the Lab building	_____	_____	High humidity on the walls may cause earthingissue and other damages to the inventories.
	Computer Lab - Commerce Block	Projector Service	Service	1	Board failure due to line fluctuation
8		Replace network i/o box	Service	33	Misplaced and damaged
9		Patch cord 1M	Purchase	33	
10		Wooden Panels maintenance	Service	_____	
11		Electrical works related to Projector power	Service	_____	Not having proper earthing
12		AC maintenance	Service	_____	Both AC are not working
13		Tube lights	Service	2	Not working
14		Chairs without rollers	Purchase	32	
15		Curtains for windows	_____	5 Windows	
16		Metal rack for Lab records	Purchase	1	Minimum 4 Shelf
17	Computer Lab - Statistics	New Projector	Purchase	1	Not available
18		New Printer	Purchase	1	Not available
19	Computer Lab - Bvoc	Projector Service	Service	1	Board failure due to line fluctuation
20		PC Service	Service	20+	Many PCs having starting issues due to minimalusage hours.
21		Network	Service	_____	Restructure the LAN arrangments.
		Interior wall maintenance	_____	_____	High humidity on the walls may cause earthingissue and other damages to the inventories.
		AC maintenance	Service	3	No ACs are in working condition
		Battery	Service/Purchase	32	Batteries have been drained completely.

		UPS • APC 10KVA	Service/Purchase	1	There were 2 UPS (6KVA is in working condition).PCB issue for 10KVA.
		Printer	Service	1	Not working
22	College Network Centre/Server Room	Fix electrical failures	Service	_____	Earthing is not proper
23		AC maintenance	Service	1	Not working
24		Fan	Purchase	1	Not available
25		Tube lights	Service/Purchase	1	Not much light available
26		Rack tray	Purchase	3	Setting of central network rack
27		Patch panel 24Port	Purchase	1	
28		Patch cord 1M	Purchase	16	

Proposal for setting up Manuscript Library

1. Objectives

- a. Collect possible number of Manuscripts across the country
- b. Preserve the manuscripts from the deterioration due to age
- c. Digitise and preserve manuscripts for future reference
- d. Institute scholars for the critical edition and research in Mss.
- e. Publish unpublished manuscripts
- f. Conduct surveys, symposiums, seminars and workshops in manuscriptology
- g. Seek financial and academic support of National Mission for Manuscripts, (NMM), Ministry of Culture, Govt. of India

2. How to proceed?

- a. Set up a room with modules partitioned with sufficient space for
 - i. Keeping manuscripts in wooden almirahs
 - ii. Digitization and preservation proceedings
 - iii. Computer lab for critical edition and publication proceedings
 - iv. Hall with a capacity of 35 seatings for workshop and training
- b. Gadgets and other requirements
 - i. Camera and allied accessories for digitization
 - ii. Computers for publication and research activities
 - iii. Citronella, lemongrass oil and other chemicals for preservation
 - iv. LCD projector and audio system for training and workshop

3. Endorsements expected after implementation

- a. Support from the Ministry of Education, Govt. of India
- b. Support from National Mission for Manuscripts, Ministry of Culture, Govt. of India
- c. Support from Central Sanskrit University, New Delhi
- d. Support from Indian Council of Historical Research, Govt. of India

Concluding Remarks

The present plan for five years envisaged for Sree Sankara College, visualize the institution as a model centre for higher learning and research in the years to come. The proposal if implemented in the institution will transform the college as a centre for research and innovation and will be utilized by the public and other academic institutions as a nodal centre. The proposal envisages the institution at the level of a university and will be moulding the generations to come in future.

ANNEXURES

Details of Infrastructure proposed to be Renovated/up-gradation:

Sl. No.	Description of Infrastructure	Detail of renovation/upgradation proposed	Proposed Area Sq. m	Total Cost per Sq. m	Total cost	Justification
1	Chandrasekhar Bharathi Seminar Hall	Technological Upgradation, Furnishing, Electrification, Air Conditioning, Audio-visual units	186	1667	2500000	The proposed budget is essential for urgently upgrading the seminar hall with modern audio-visual equipment and seating arrangements to meet the increasing demand for hosting conferences, workshops, and academic events, enhancing the overall learning experience for students.
2	Sri Abhinava Vidyatheertha Learning Resource Centre (Library)	Upgradation of the infrastructural facilities of the library in order to provide users with adequate resources and services including digital library, human library facility, space for orientation, upgradation of the seating capacity and service for the disabled.	356		1500000	Library being a growing organism, the institute requires more space to accommodate resources. The allocation is justified by the immediate need to update the library infrastructure, including digitization efforts, acquisition of new books and resources, and the integration of technology to meet the evolving demands of students and faculty for a well-equipped and modernized learning resource center.

3	Ladies Hostel	Renovation, Maintenance of hostel facilities	756	1323	1000000	The existing hostel facility is very insufficient to accommodate its girls students who form a major proportion of students. Moreover they hail from rural backgrounds. The cost is designated for urgent renovation and upgrading of the Ladies' Hostel to meet current safety standards, provide modern amenities, and enhance the overall living conditions for female students, ensuring a conducive and secure residential environment.
4	Ladies waiting Room	Renovation and Maintenance	1000	500	500000	The institute urgently needs the upgrading of the sanitary facility of its girls students who form a major proportion. The proposed budget covers the immediate renovation of the Ladies' Waiting Room, providing a comfortable and secure space for female students, faculty, and visitors while aligning with the current standards of safety and aesthetics.
		Total	4544 sq. m	12104	5500000	

Details of Lab Equipments to be procured

Sl. No.	Name of the Equipment	Quantity	Cost per Unit	Total Cost	Justification
1.	Electrochemical WorkStation	1	11,59,500	11,59,500	The machine caters to the needs of researchers working in Material Sciences, Chemical Syntheses, Physical Chemistry research, etc.
2.	Muffle Furnace	1	1,00,000	1,00,000	
3.	Emission Spectrometer	1	6,00,000	6,00,000	
4.	Real time PCR	1	16,00,000	16,00,000	most advanced techniques used in biological research and to be used in multidisciplinary research
5.	Weighing Balance (Sartorius)	1	1,50,000	1,50,000	Acquiring instruments for undergraduate courses under the National Education Policy (NEP) government project is essential to
6.	Digital Melting Point Apparatus	2	15,000	30,000	
7.	Distillation Apparatus	7	6,000	42,000	
8.	Potentiometer	3	15,000	45,000	
9.	Conductometer	4	16,000	64,000	
10.	Viscometer	5	1,000	5,000	
11.	Heating Magnetic Stirrer	4	8,000	32,000	
12.	Colorimeter	1	13,000	13,000	
13.	Weighing Balance (4 digit)	1	49,500	49,500	
14.	Weighing Balance (3 digit)	1	35,000	35,000	
15.	Weighing Balance (2 digit)	1	15,000	15,000	

16	High Vacuum Pump	1	7,500	7,500	provide students with hands-on learning experiences, fostering practical skills development and enhancing the quality of education in alignment with national educational objectives.
17	Water Bath (20 pots)	1	20,000	20,000	
18	Compound Microscope	20	5,000	1,00,000	
19	Compound Microscope with camera	2	20,000	40,000	
20	Distillation unit	1	6,000	6,000	
21	Colorimeter	1	13,000	13,000	
22	Spectrophotometer	1	25,000	25,000	
23	Autoclave	1	10,000	10,000	
24	pH meter	1	15,000	15,000	
25	Microtome (Rotary)	1	21,000	21,000	
26	Weighing balance	1	49,500	49,500	
27	Centrifuge	1	4,000	4,000	
28	Signal Generator (1 MHz)	5	5,800	29,000	
29	Digital Storage Oscilloscope	5	24,000	1,20,000	
30.	DC Power Supply (0-30 V, 1 A)	5	3800	19,000	
31	Spectrometer (7 inch, brass)	4	8500	34,000	
32	Optical Breadboard (2x3 feet)	2	27000	54,000	
33	Diode Laser (650 nm)	4	10000	40,000	
34	Diode Laser (540 nm)	2	18000	36,000	
35	XY Translation Stage	2	15000	30,000	
36	Balance	1	10,000	10,000	
37	Sphygmomanometer	2	2,000	4,000	
38	Trinocular Microscope	1	93,000	93,000	
39	Olympus binocular microscope	2	50,000	1,00,000	
40	Centrifuge	1	30,000	30,000	
41	Tally Softwares	1	1,00,000	1,00,000	

42	SPSS Software	1	50,000	50,000	
----	---------------	---	--------	--------	--

Details of Soft component activities

Sl . No.	Activity	Purpose	Details	Unit (Such as number of vocational courses, mentorshi p programm es, etc)	Cost per unit	Total Cost	Target numbe r of benefic iaries	Expected outcome
1	Innovation and Research	To inculcate innovation and entrepreneurial traits among the students	Advanced learners in Faculties (Research Guides) & Research Scholars	5	NA	NA	80	Supporting research projects and establishing research centers to foster a research ecosystem
2	Faculty Development	The NEP emphasises the significance of innovative teaching methods and training in the concerned area.	Conducting faculty development programs to enhance teaching and research skills.	10	NA	NA	150	Promoting training and workshops for faculty members to stay updated with the latest advancements in their respective fields.
3	Entrepreneurship and Skill Development	Entrepreneurial qualities need to be given importance as it would increase self	Integrating entrepreneurship and skill development programs into the curriculum	12	NA	NA		Facilitating industry-academia partnerships to enhance employability

		employability of the students						
4	Student Support Services Socio-Economically Backward Community	Marginalized community may be uplifted by providing student support services, career counselling.	Implementing comprehensive student support services, including counseling, career guidance, and mentorship programs	36	NA	NA	800	Establishing mechanisms to address the diverse needs of students, including those from marginalized communities

Working Women's Hostel (WWH)

ESTIMATE OF PROPOSED COSTRUCTION OF WORKING WOMENS HOSTEL BUILDING FOR SREE SANKARA COLLEGE MATTOOR KALADY.	
S/No.	Description
I	GROUND FLOOR, FIRST FLOOR, SECOND FLOOR.
1	Earthwork excavation in ordinary soil and depositing on bank including back filling , cost of all labour charges etc. complete .
2	Plain Cement Concrete 1:4:8 using 40mm nominal size broken stones below plinth beam including laying, consolidating, curing, shuttering, etc complete
3	Reinforced cement concrete M20 Grade using 20mm down size aggregate for Column footing including form work watering, curing all materials and labour charges etc. complete.
4	Reinforced cement concrete M20 Grade using 20mm down size aggregate for Plinth Beam including form work watering, curing all materials and labour charges etc. complete.
5	Reinforced cement concrete M20 Grade using 20mm down size aggregate for Columns including all formwork, watering, curing etc. complete
6	Solid block Masonry work in cement mortar 1:6 with Solid Block of specified size forbasement including form work watering, curing all materials and labour charges etc. complete.for foundation
7	Plastering with C.M. 1:4, 12mm thick for inner walls , one coat, floated hard and trowelled smooth including scaffolding, curing, etc complete.for basement.
8	Quarry dust filling inside basement including watering, consolidation in layers to get a procter density of 95%.

9	Masonry work in cement mortar 1:5 with Solid Block of specified size including scaffolding, curing, etc complete. For superstructure.
10	Half Brick work in cement mortar 1:5 with solid blocks of specified size for superstructure at all heights including scaffolding, curing, etc complete.
11	Reinforced cement concrete M20 Grade using 20mm down size aggregate for lintel including all formwork, watering, curing etc. complete
12	Reinforced cement concrete M20 Grade using 20mm down size aggregate for beams including all formwork, watering, curing etc. complete
13	Reinforced cement concrete M20 Grade using 20mm down size aggregate for stair case including all formwork, watering, curing etc. complete
14	Reinforced cement concrete M20 Grade using 20mm down size aggregate for sunshade & thin slab including all formwork, watering, curing etc. complete
15	Reinforced cement concrete M20 grade using 20mm down size aggregate for Roof slab(flat) including all form work, watering, curing etc. complete
16	Reinforcement for RCC works, bent, tied and placed in position using corrosion resistant ribbed tor steel including welding of laps etc complete. for pile cap and Plinth beam.

COURSES IN DETAIL

Course Code	:	HAW
Course Name	:	Diploma in Health & Wellness (DHW)
Department	:	Department of Commerce
Collaboration	:	Department of Ayurveda, Sree Sankaracharya University of Sanskrit
Nature	:	Advanced Diploma
Period of Study	:	One Year

Objective

Our program in Health, Wellness and Occupational Studies gives students a broad education that will prepare them for a variety of career paths. Students will be prepared for opportunities including application to graduate programs in occupational therapy, disability studies, physical therapy, counseling, or related health professions, as well as a career as a wellness coach, wellness coordinator, activity director, health educator, case manager, medical salesperson, or paraprofessional in mental health and educational settings.

Our program grounds students in the core arts and sciences, with an emphasis on courses that study human occupation, such as Occupational Science, Occupational Media, and Disability Studies. The curriculum includes wellness courses such as Principles of Health Promotion, Stress Management, and Substance Abuse Prevention. Students also study interdisciplinary health subjects, alongside Nursing, Applied Exercise Science, Athletic Training, and Dental Hygiene students.

Outcome

Students will be able to describe how to use the UNH Well-Being Wheel as a tool to increase understanding of wellness and well-being, and self-awareness for self-care.

Students will be able to demonstrate an understanding of one's health issues/conditions, including prevention approaches, self-care practices, and appropriate intervention and treatment when needed.

Students will be able to describe Health & Wellness programs and services offered, how to access them and value to their well-being.

Mode of Delivery

Massive Open Online Courses (MOOC)

Target Group

International Students, Employees of MNCs, PWD Category

Infrastructure, if any

Cost involved

Implementation Cost : Rs.100000/- (Approx.)

Course Code : MBSR

Course Name : **Mindfulness Based Stress Reduction (MBSR)**

Department : Counselling Cell

Collaboration : Indian Association of Clinical Psychologists: IACP

Nature : Advanced Diploma

Period of Study : One Year

Objective

Earning a certificate in Mindfulness-based Teaching and Learning prepares you to acquire a professional specialization that involves helping people enhance their well-being, cope with stress, or manage chronic illness. Become a trainer in your own field or industry and promote health and well-being among employees and clients through a mindfulness-based practice.

Outcome

Mindfulness-Based Teaching and Learning is a valuable specialization to add to your résumé to demonstrate that you have the skills and credentials to promote evidence-based health promotion and well-being among both clients, students, or colleagues.

The program provides pathways to certification as a MBSR facilitator. Successful completion of the MBTL program is also a pathway into graduate programs, or, for learners already enrolled in such a program, an attractive area of specialization

Mode of Delivery

Massive Open Online Courses (MOOC)

Target Group

Employees of MNCs, People with Chronic illness.

Infrastructure, if any**Cost involved**

Implementation Cost : Rs.100000/- (Approx.)

Course Code	:	PPSEC
Course Name	:	Producing and Perceiving Sounds: English for Careers (PPSEC)
Department	:	Department of English
Collaboration	:	UC College Aluva, Ernakulam (Affiliated College of MG Univeraity)
Nature	:	Diploma
Period of Study	:	One Year

Objective

The course intends to educate the public about the basics of communication with a focus on phonetics- the science of how speech sounds are articulated. This will equip people with an awareness of how English words are pronounced, which will be crucial in helping them settle on a career.

Outcome

➤ **Builds Confidence**

When learners by themselves can decode sounds and their relation to the pronunciation of letters and their combination in words, communication becomes a natural process for them. Even when

the words seem unfamiliar to them, instead of getting overwhelmed they will be able to associate words with clear conceptualization.

➤ **Helps in Recognition and Interpretation**

Be it young learners or adults, once they know how to use phonetics in everyday life, they can easily recognize the sound each letter makes and how they must be pronounced when they are in combination with each other. One of the core objectives of learning phonetics is to make learners capable of interpreting the words even when they listen from a person having a different accent.

➤ **Helps to Spell Words Correctly**

Phonetics not only guides the learner in decoding the sound, it also helps them to know how a word must be spelt out while writing. When you spell a word with a phoneme, it is called Grapheme. Graphemes are the symbols that are used to identify a single phoneme – a letter or group of letters that represent the sound. And effective communication can only be completed when learners can use the language appropriately in both reading and writing.

➤ **Improves Fluency**

When it comes to the fluency of a speaker, two things matter the most:

- How fast can a person recognize words!
- How accurate the pronunciation is!

Mode of Delivery

Massive Open Online Courses (MOOC)

Target Group

Graduate Students, Higher Secondary Level Students

Infrastructure, if any

NA

Cost involved

Implementation Cost : Rs.100000/- (Approx.)

Course Code	:	HC
Course Name	:	Hindi Computing
Department	:	Department of Hindi
Collaboration	:	Not Applicable
Nature	:	Certification
Period of Study	:	Six Months

Objective

The major objectives of the course are:

- To understand Hindi Computing and its essential elements.
- To impart knowledge to common man by making him able to use the computer in Hindi Language for basic purposes and make him digitally literate.
- To realize the importance of Hindi computing in present time and future.
- To familiarize the various components of Hindi Computing.

-
- To introduce the learner the important applications of Hindi Computing.
 - To channelize students creative abilities towards writing in Hindi through computing.
 - To acquire awareness of evolution and growth journey of Hindi based computer technology and software.
 - To familiarize with the basic elements and present form of Hindi computing.
 - To attain good operation knowledge in Hindi computing.

Outcome

- To explore the employment opportunities through Hindi computing.
- To evaluate the basic elements and present form of Hindi computing.
- To understand the growth journey of Hindi in digital world.
- Strive to find remedies and resolve the obstacles in the field of Hindi Computing.

Mode of Delivery

Blended Learning

Target Group

Local School Students, Graduates and General Public

Infrastructure, if any

Cost involved

Implementation Cost : Rs.50000/- (Approx.)

Course Code	:	IDKY05
Course Name	:	Integrated Degree on Kalari and Yoga (IDKY)
Department	:	Department of Sanskrit
Collaboration	:	Rishi Gurukulam, Koovappady, Perumbavoor
Nature	:	Advance Diploma
Period of Study	:	Three Years

Objective

The major objectives of the course are:

- To introduce yoga education, its principles and practices for holistic growth of students

- To create yoga experts with in-depth knowledge based on yogic texts.
- To establish holistic health, social harmony and world peace by training them to be good citizens who can offer social wellbeing.
- The ability to synthesize the acquired knowledge, understanding and experience for a better and improved comprehension of the physical and psychological problems in the human existence and to promote yogic life style for their possible solutions.

Outcome

- At the end of the course the students will be able to understand traditional Indian Yoga systems; the philosophy of the Yoga systems and the new thought in Yoga movement in the country.
- The students will be able to understand the principles of Hatha Yoga and the texts in this field. The programme will develop basic understanding of the human anatomy, the human physiology and a deeper understanding of the human systems.
- The students will be introduced to the essential elements of a yogic life style, the concept of health and disease and their remedies through yoga practice. They will also learn the overview of the five sheath human existence.
- The students will be introduced to regular and rigorous practice (sadhana) of yoga practices that would make them disciplined and knowledgeable Yoga teachers.

Mode of Delivery

Offline Campus Programme

Target Group

Local School and College Students, General Public

Infrastructure, if any

General

Cost involved

Implementation Cost : Rs.300000/- (Approx.)

Course Code	:	CPCEM06
Course Name	:	Conservation, Preservation and Critical editing of Manuscripts (CPCEM)
Department	:	Department of Sanskrit
Collaboration	:	Swadhyaya Research Foundation
Nature	:	Certification
Period of Study	:	Six Months

Objective

-
- This course aims to familiarize students with various aspects of conservation in Modern India
 - Collection, conservation and study of the traditional knowledge materials like (Palm leaves, papers, maps, pictures, files etc.) related to health care system and their cultural and clinical importance.
 - Enrichment of the unexplored knowledge and conducted research of Ayurveda through the Manuscriptology.
 - Collection, conservation, study, edition and publication of unpublished manuscripts.

Outcome

- Student will learn about the various organizations in India which are working towards the conservation of our cultural heritage
- Student will learn about the different properties of paper –both physical and chemical characteristics that is used for preserving manuscripts
- Student will get a thorough knowledge on different methods for preservation.
- Learn about the various methodologies adopted for restoring documentary wealth
- Learn about the various challenges in conservation and its solutions

Mode of Delivery

Massive Open Online Courses (MOOC)

Target Group

International Students, General Public

Infrastructure, if any

Cost involved

Implementation Cost : Rs.50000/- (Approx.)

Course Code	:	PFM07
Course Name	:	Personal Finance Management (PFM)
Department	:	Department of Economics
Collaboration	:	Kerala Economic Association, Kerala
Nature	:	Diploma
Period of Study	:	One Year

Objective

The course presents essential knowledge and skills to make informed decisions about real world financial issues. Students will learn how choices influence occupational options and future earning potential. Students will also learn to apply decision-making skills to evaluate career choices and set personal goals. The course content is designed to help the learner make wise spending, saving, and credit decisions and to make effective use of income to achieve personal financial success.

The course covers the basic principles needed for effective personal finance management, including the practical applications of money management, budgeting, taxes, credit, insurance, housing, investments, and retirement planning.

Outcome

- Upon successful completion of this course, the student will be able to do the following:
- Set financial goals and develop a financial plan which allows for the management of cash and savings and the appropriate use of credit
- Explain the time value of money
- Select appropriate types of insurance policies for specific needs
- Develop an investment plan for the future which may include saving for retirement, estate planning and the creation of a will.

Mode of Delivery

Massive Open Online Courses (MOOC)

Target Group

Casual Labours including migrant workers, General Public

Infrastructure, if any

Cost involved

Implementation Cost : Rs.100000/- (Approx.)

Course Code	:	DSABRW
Course Name	:	Data Science, Analytics & AI for Business & the Real World (DSAAIBRW)
Department	:	Department of Statistics
Collaboration	:	The Kerala Statistical Association, Kerala
Nature	:	Advanced Diploma
Period of Study	:	One Year

Objective

Data Science, Analytics & Artificial Intelligence are broad and ambitious topics that can provide valuable insights and skills to individuals and professionals looking to leverage data science, analytics, and artificial intelligence in practical business contexts. This course focuses on understanding all the basic theory and programming skills with various case studies. It is designed to equip participants with the knowledge and skills necessary to harness the power of data science, analytics, and artificial intelligence in real-world business scenarios. Even for a business professional, manager, aspiring data scientist or a student, this course will enable to make data-driven decisions, solve complex business problems, and drive innovation.

Outcome

- Develop a solid foundation in the principles, concepts, and terminology of data science, analytics, and AI.
- Learn how to collect, clean, and pre-process data from various sources to make it suitable for analysis.
- Apply statistical methods and descriptive analytics techniques to gain insights from data.
- Gain proficiency in building predictive models using machine learning algorithms to make data-driven predictions
- Understand how to use optimization and decision-making models to provide actionable recommendations for business problems.

Mode of Delivery

Massive Open Online Courses (MOOC)

Target Group

Professionals, Graduate Students

Infrastructure, if any

Cost involved

Implementation Cost : Rs.100000/- (Approx.)

Course Code	:	AEM
Course Name	:	Applied Energy Materials (AEM)
Department	:	Department of Chemistry
Collaboration	:	IIT, Palakkad

Nature : Advanced Diploma
Period of Study : One Year

Objective

In this new modern era energy demands are increasing at an alarmingly high level. The solution for such high energy demands is simple – sustainable energy resource and development of tools to exploit them in greener way. In this context, development of such technologies by coordinating advanced technologies such as nanotechnology, photovoltaics, theoretical/computational knowledge could pave the way for creating a cutting-edge method for sustainable energy generation.

Outcome

- Become independent in building research career in sustainable energy production
- Able to work in semiconductor industry, battery industry, energy research etc.
- How to link scientific output to make a device that can be directly applied to industry

Mode of Delivery

Massive Open Online Courses (MOOC)

Target Group

Graduate and Post-graduate students, Research fellows, Research Oriented faculty members

Infrastructure, if any

Cost involved

Implementation Cost : Rs.100000/- (Approx.)

Course Code : EZ

Course Name	:	Economic Zoology (EZ)
Department	:	Department of Zoology
Collaboration	:	Central Sericulture Research and Training Institute, Mysore
Nature	:	Advanced Diploma
Period of Study	:	One Year

Objective

In this new modern era energy demands are increasing at an alarmingly high level. The solution for such high energy demands is simple – sustainable energy resource and development of tools to exploit them in greener way. In this context, development of such technologies by coordinating advanced technologies such as nanotechnology, photovoltaics, theoretical/computational knowledge could pave the way for creating a cutting-edge method for sustainable energy generation.

Outcome

The course aims to provide practical and theoretical skills of economic zoology. This course contains various aspects of zoology that help to earn livelihood. The topics covered include principles of entomology and biodiversity, pest monitoring and management, biological control of pests, apiculture, sericulture, and the economic importance of Mammals.

Mode of Delivery

Massive Open Online Courses (MOOC)

Target Group

Professionals, Graduate Students

Infrastructure, if any

Cost involved

Implementation Cost : Rs.100000/- (Approx.)

Course Code	:	TFNPSC
Course Name	:	Thin Film and Nano Particles : Synthesis and Characterisation (TFNPSC)
Department	:	Department of Physics
Collaboration	:	Universiad Autonoma de Neuvo Leon, Mexico
Nature	:	Advanced Diploma
Period of Study	:	One Year

Objective

Synthesis methods which will be covered include physical methods such as Molecular Beam Epitaxy, Laser Beam evaporation, various Sputtering techniques, etc., and chemical methods such as Sol-Gel techniques, Chemical Bath Deposition, Spray Pyrolysis, Atomic Layer Deposition, etc. Nanoparticle Synthesis involves various methods under Top-Down and Bottom-Up approaches.

The Characterisation techniques which will be discussed involves X-Ray Diffraction techniques, UV-Visible Spectroscopy, Electrical and Thermal Characterisation, Imaging techniques, etc.

Outcome

This Course equips the student with fundamental knowledge on thin film preparation and Nanoparticle Synthesis. The course also enables the student to characterise the synthesised material so that prospective applications can be envisaged. The student will also be ready to undertake research activities in this ever-growing area of Material Science.

Mode of Delivery

Massive Open Online Courses (MOOC)

Target Group

Professionals, Graduate Students

Infrastructure, if any

General

Cost involved

Implementation Cost : Rs.100000/- (Approx.)

Course Code	:	MEWE
Course Name	:	Marketing Essentials for Women Entrepreneurs (MEWE)
Department	:	Department of Commerce
Collaboration	:	Kudumbashree Mission, Kerala
Nature	:	Advanced Diploma
Period of Study	:	One Year

Objective

- To understand the concepts of marketing management and to learn about marketing process for different types of products and services
- To understand the tools used by marketing managers in decision situations
- Develop a digital marketing plan that will address common marketing challenges
- Recognize Key Performance Indicators tied to any digital marketing program
- Improve Return on Investment for any digital marketing program and launch a new, or evolve an existing, career path in Digital Marketing.

Outcome

The virtual training aims to provide the following to the women entrepreneurs:

- Clear idea about digital marketing and e-commerce
- Introduction to online e-learning course on e-commerce
- Hands-on training on how to register and link their business to an e-commerce platform
- Building a network of women entrepreneurs and provide opportunity to display their products and services to fellow participants.

Mode of Delivery

Massive Open Online Courses (MOOC)

Target Group

Women Entrepreneurs, Women SHGs, Women under Person With Disabilities category

Infrastructure, if any

NA

Cost involved

Implementation Cost : Rs.100000/- (Approx)

Course Code	:	MC
Course Name	:	Mushroom Cultivation (MC)
Department	:	Department of Biotechnology
Collaboration	:	Directorate of Extension, Kerala Agricultural University
Nature	:	Certifications
Period of Study	:	Six Months

Objective

The course provides employment and income for the society. Mushrooms are popular for their delicacy ,flavor and nutrition . Mushrooms play an important role to enrich human diet particularly in India where large sections of the population are undernourished.

Mushroom cultivation is an ideal means of recycling agro-wastes like straw and saw dust which are available abundantly. By using saw dust as a substrate for cultivation we can effectively manage the solid wastes of the nearby plywood /wood industries as a part of solid waste management. The spent compost from mushroom farms is a good organic manure and a better substrate for bio-gas production.

Outcome

- It is a labour intensive indoor activity that helps the landless, small and marginal farmers to raise their income.
- Diverse economic activity
- Create employment, especially for the unemployed/underemployed youth, weaker sections of the society and women.
- It provides an entrepreneurship quality among the student community

Mode of Delivery

Massive Open Online Courses (MOOC)

Target Group

Farmers, Unemployed Employed youth, Weaker Sections of the society, Students etc

Infrastructure, if any

Spawn Preparation Room, Room for Sterilisation & bed preparation, Mushroom Incubation Room, Laminar Airflow Chamber, Air Conditioner, Autoclave

Cost involved

Infrastructure Requirement for Mushroom Cultivation (Estimated cost) : 5 Lakhs

Other Requirements : Rs. 500000/-
Grand Total Estimated Cost : **Rs. 1000000/-**

Course Code : BFEP
Course Name : **Banana Fibre Extraction and Production (BFEP)**
Department : Department of Botany
Collaboration :
Nature : Diploma
Period of Study : Six Months

Objective

The objective of making paper from banana fibre is to utilize the strong and durable fibres found in banana plant pseudostems and leaves to produce an eco-friendly and sustainable alternative to traditional wood-based paper

Outcome

This curriculum provides skills & knowledge necessary for Banana fibre processor. There will be both demonstration by instructors/trainers and opportunity by trainees to perform skills/tasks specified in this curriculum. Trainees will practice & learn skills using typical tools, materials, equipment & machines necessary for the program.

After successful completion of this program the trainees will be equipped with the knowledge and skills related to introduction to banana/ banana fibre; manufacture of banana fibres; banana fibre extraction; banana fibre yarn production; banana fibre cloth production; producing marketable banana fibre products; and marketing of banana fibre products.

Mode of Delivery

Massive Open Online Courses (MOOC)

Target Group

Farmers, Unemployed Employed youth, Weaker Sections of the society, Students etc

Infrastructure, if any

Room, Other equipments

Cost involved

Total Estimated Cost : Rs. 250000/-

Course Code	:	IIAA
Course Name	:	Introduction to Indian Art and Architecture- A Historical Overview (IIAA)
Department	:	Department of History
Collaboration University	:	Marthoma College, Enakulam (Affiliated College of Mahatma Gandhi University)
Nature	:	Certification
Period of Study	:	Six Months

Objective

Art and architecture reflects not only the creative power and imagination of a society, but also the intellectual, spiritual and technological development of a region/country. The proposed course aims to delve into deeper the development of Indian art and architecture and multifarious elements incorporated in making a distinct socio cultural identity

Outcome

Mode of Delivery

Massive Open Online Courses (MOOC)

Target Group

General Public.

Infrastructure, if any

Room for setting up of Mini Museum

Cost involved

Total Estimated Cost : Rs. 500000/-

Course Code : VM

Course Name	:	VEDIC MATHAMATICS (VM)
Department	:	Department of Mathematics
Collaboration	:	NIL
Nature	:	Certifications
Period of Study	:	Six Months

Objective

Globally we are facing a crisis in Math education. Math phobia is prevalent globally among students, teachers and even parents. There is an acute scarcity of math teachers around the world so much so that no one wants to become a Math teacher anymore. So the objective is to make math fun filled and arise interest which in turn will increase the speed and accuracy in various competitive and placement exam.

Vedic Math can be considered as a new and emerging sector in India. Thanks to the internet it is getting widespread attention and focus. With the help of the Government of India, Vedic math is all set to become popular and a boon for students. The concepts taught in Vedic Mathematics has widespread applications for Grade III onwards all the way up to competitive exam aspirants. Hence the future and scope of Vedic Math is very wide and given time it will only shine bright

Outcome

After completion of the course, students shall be able to

- Think critically
- Find mathematical solution of algebraic expressions
- Solve system of linear equations and matrices faster and with ease.
- Appreciate the Mathematical advancements of Ancient India.

Mode of Delivery

Massive Open Online Courses (MOOC)

Target Group

UG and PG Students

Infrastructure, if any

NA

Cost involved

Implementation Cost : Rs.50000/- (Approx)

Course Code	:	TMCMI
Course Name	:	Transcriptomics and Metabolomics: A Road Map to Comprehensive Molecular Insights (TMCMI)
Department	:	Department of Biochemistry
Collaboration	:	Department of Biotechnology, CUSAT and OmicsGen Pvt. Ltd.
Nature	:	Certification
Period of Study	:	Six Months

Objective

The course aims at providing an interdisciplinary approach to understand complex biological systems as a whole. This integration enables the identification of key regulatory networks and pathways in a biological system and allows identification of specific molecular signatures associated with diseases, aiding in early diagnosis and development of precision medicine strategies. Students will be introduced with innovative concepts and resources that includes: Next generation sequencing (NGS), advanced spectroscopic techniques, bioinformatics tools, softwares and databases.

Outcome

- The course orients a skill and knowledge-based learning among student community.
- Exposes the audience to innovative and trending techniques and methodologies in the field of Biology
- The course involves an interdisciplinary collaboration between biologists, chemists, bioinformaticians and clinicians, thereby providing students and research community the opportunity to work across disciplines.
- Studying transcriptomics and metabolomics equips students and the research community to contribute significantly to the fields of disease research, drug discovery, personalised medicine, nutrition, environmental science and agriculture.

Mode of Delivery

Massive Open Online Courses (MOOC)

Target Group

Biologists, Chemists, Bioinformaticians and Clinicians

Infrastructure, if any

Laboratory

Cost involved

Implementation Cost : Rs.50000/- (Approx)

Course Code	:	EWCS
Course Name	:	Energy & Water Conservation Strategies
Department	:	Department of Zoology
Collaboration	:	NIL
Nature	:	Certification
Period of Study	:	Six Months

Objective

To introduce students to energy & water saving behaviours and why it is important to save or conserve energy.

- Identify everyday activities that use water.
- Work on the ways to conserve water,
- Identify everyday activities that use electricity,
- Design ideas to conserve electricity,

Outcome

After completing the course, the student will be able to:

- Trigger the idea for tackling the issues of water & energy conservation pragmatically.
- Activate the skill to address such sort of issues in day-today life
- Enable them to design circuits using readily available simple & cheaper

Mode of Delivery

Massive Open Online Courses (MOOC)

Target Group

Students at College and School Level

Infrastructure, if any

NA

Cost involved

Implementation Cost : Rs.50000/- (Approx)

Course Code	:	OWMES
Course Name	:	Organic Waste Management and Environmental Sustainability
Department	:	Department of Microbiology
Collaboration	:	Local Governance
Nature	:	Diploma
Period of Study	:	Six Months

Objective

A comprehensive, scientific, and carefully thought-out environmental management strategy is urgently needed because waste management-related issues are numerous and intricately linked. Today, waste management includes the treatment, disposal, and recycling of garbage in addition to waste collection and transportation. Therefore, creating a knowledgeable and skilled staff is crucial to resolving these difficulties. Experts in this industry who can handle the trash produced by development projects are greatly needed. In order to meet future needs and the current situation, we offer certificate course on Organic Waste Management and Environmental Sustainability.

Outcome

Increase participant knowledge of waste management, related issues, legal frameworks, and available technology. It also aims to support participants in examining the potential of entrepreneurship in the waste management supply chain through seminars on business development, project management, financial evaluations and management, marketing and branding, etc.

Mode of Delivery

Blended Learning

Target Group

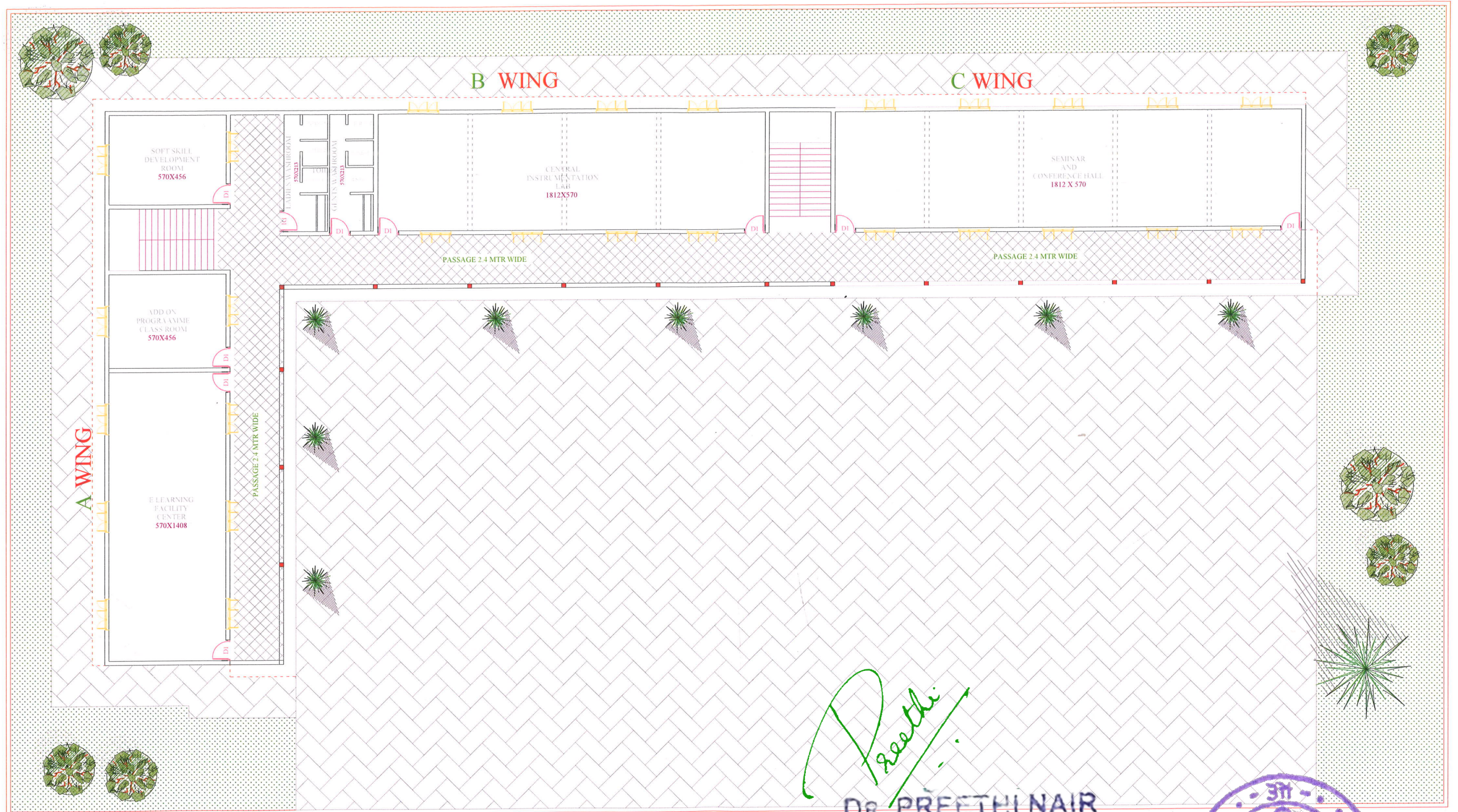
Waste generators, Local government representatives, Waste managers and waste management practitioners, Officials from state, urban and local bodies, Academics, consultants and students, NGO/civil society and private companies, Volunteers aspiring to work and contribute to the SWM sector

Infrastructure, if any

NA

Cost involved

Implementation Cost : Rs.100000/- (Approx)



DR. PREETHI NAIR
PRINCIPAL IN-CHARGE
SREE SANKARA COLLEGE
KALADY-683 674

UNITED BUILDERS
ENGINEERS, CONTRACTORS
AND INTERIORS
GOKUL CHAMBERS, KANNANTHODU SH LANE
EDAPALLY
Kochin-682024.
Ph:- 0484-2348322, 9388629312, 9349228322
E-mail: unitedbuilders135@gmail.com

REVISION	REMARKS	PROJECT TITLE : PROPOSED CONSTRUCTION OF SWAMI AGAMANANDA CENTRE FOR ADVANCED STUDIES, KALADY			
		CLIENT :	Scale :	Date :	
		SREE SANKARA ARTS COLLEGE, KALADY	: NTS	: 22-01-2024	
		TITLE:	Drawn :	Checked :	
		CONCEPT LAYOUT - GROUND FLOOR	: UB	: UB	
			Drawing No :1'	AREA: 7180 SQFT	
All dimension are in centimeters Do not scale out this drawing Please contact the office for any clarification					



DR. PREETHI NAIR
PRINCIPAL IN-CHARGE
SREE SANKARA COLLEGE
KALADY-683 574

REVISION	REMARKS	PROJECT TITLE : PROPOSED CONSTRUCTION OF SWAMI AGAMANANDA CENTRE FOR ADVANCED STUDIES, KALADY			
		CLIENT :	Scale :	Date :	
		SREE SANKARA ARTS COLLEGE, KALADY	: NTS	: 22-01-2024	
		TITLE:	Drawn :	Checked :	
		CONCEPT LAYOUT - FIRST FLOOR	: UB	: UB	
			Drawing No :1'	AREA:7180 SQFT	

All dimension are in centimeters
Do not scale out this drawing
Please contact the office for any clarification

UNITED BUILDERS
ENGINEERS, CONTRACTORS
AND INTERIORS
GOKUL CHAMBER, KANNANTHODATHIL LANE
EDAPALLY
Kochin-682024.
Ph:- 0484-2348322,9388629312,9349228322
E-mail: unitedbuilders135@gmail.com

**ESTIMATE OF PROPOSED COSTRUCTION OF SWAMI AGAMANANDA CENTRE
FOR ADVANCED STUDIES FOR SREE SANKARA COLLEGE MATTOOR KALADY.**

S/No.	Description
I	GROUND FLOOR, FIRST FLOOR, SECOND FLOOR.
1	Earthwork excavation in ordinary soil and depositing on bank including back filling , cost of all labour charges etc. complete .
2	Plain Cement Concrete 1:4:8 using 40mm nominal size broken stones below plinth beam including laying, consolidating, curing, shuttering, etc complete
3	Reinforced cement concrete M20 Grade using 20mm down size aggregate for Column footing including form work watering, curing all materials and labour charges etc. complete.
4	Reinforced cement concrete M20 Grade using 20mm down size aggregate for Plinth Beam including form work watering, curing all materials and labour charges etc. complete.
5	Reinforced cement concrete M20 Grade using 20mm down size aggregate for Columns including all formwork, watering, curing etc. complete
6	Solid block Masonry work in cement mortar 1:6 with Solid Block of specified size for basement including form work watering, curing all materials and labour charges etc. complete.for foundation
7	Plastering with C.M. 1:4, 12mm thick for inner walls , one coat, floated hard and trowelled smooth including scaffolding, curing, etc complete.for basement.
8	Quarry dust filling inside basement including watering, consolidation in layers to get a procter density of 95%.
9	Masonry work in cement mortar 1:5 with Solid Block of specified size including scaffolding, curing, etc complete. For superstructure.
10	Half Brick work in cement mortar 1:5 with solid blocks of specified size for superstructure at all heights including scaffolding, curing, etc complete.
11	Reinforced cement concrete M20 Grade using 20mm down size aggregate for lintel including all formwork, watering, curing etc. complete
12	Reinforced cement concrete M20 Grade using 20mm down size aggregate for beams including all formwork, watering, curing etc. complete
13	Reinforced cement concrete M20 Grade using 20mm down size aggregate for stair case including all formwork, watering, curing etc. complete
14	Reinforced cement concrete M20 Grade using 20mm down size aggregate for sunshade & thin slab including all formwork, watering, curing etc. complete
15	Reinforced cement concrete M20 grade using 20mm down size aggregate for Roof slab(flat) including all form work, watering, curing etc. complete
16	Reinforcement for RCC works,bent,tied and placed in position using corrision resistant ribbed tor steel including welding of laps etc complete.for pile cap and Plinth beam.

17	Plain Cement Concrete 1:4:8 using 40mm nominal size broken stones for flooring, including laying, consolidating, curing, shuttering, etc complete.for flooring.
18	Plastering with C.M. 1:3 9mm thick for under sides of slabs & sunshades , one coat floated hard and trowelled smooth including scaffolding, curing, etc complete. For ceiling
19	Plastering with C.M. 1:4, 12mm thick for inner walls , one coat, floated hard and trowelled smooth including scaffolding, curing, etc complete.
20	Plastering with C.M. 1:4, 12mm thick for outer walls , one coat, floated hard and trowelled smooth including scaffolding, curing, etc complete.
21	Providing watercutting in required areas.
22	Supplying and fixing wooden paneled doors and wooden outer frame made out of anjilly or mahagony with necessary fittings like hinges,mortice lock,tower bolt,door bush including all materials and labour charges.for entrance and rear
23	Supplying and fixing PVC doors with necessary fittings like hinges,towerbolt including all materials and labour charges etc complete.for toilet.
24	Supplying and fixing wooden glazed windows made out of anjilly or mahagony with necessary fittings like hinges,hooks& eye ,M S guard bars including all materials and labour charges.
26	Painting 2 coats of acrylic interior emulsion for Ceiling having approved quality and colour, one coat of cement primer after rubbing with sand paper and properly cleaning the surface etc complete.
27	Painting 2 coats of acrylic interior emulsion for inside walls having approved quality and colour, one coat of cement primer after rubbing with sand paper and properly cleaning the surface etc complete.
28	Painting 2 coats of acrylic exterior emulsion for outside walls having approved quality and colour, over a priming coat after rubbing with sand paper and properly cleaning the surface etc complete.
29	Painting 2 coats of synthetic enamel for doors & windows,grills having approved quality and colour, over a priming coat after rubbing with sand paper and properly cleaning the surface etc complete.
30	Laying and pointing vitrified tiles of approved quality over cement mortar 1:5 20mm thick and pointing the joints with water proof tile joint filler to match the tile etc. complete for floors.
31	Skirting with vitrified tiles in C.M. 1:6 cement grout for binding and filling the joints with suitable colored joint filler including all materials and labour charges etc, complete.
32	Laying and pointing ceramic tiles of approved quality over cement mortar 1:5 20mm thick and pointing the joints with epoxy joint filler to match the tile etc. complete for toilet floor.
33	Dadoing walls with best quality glazed tiles 200mm x 150mm or nearest size of approved quality fixed with neat cement grout and pointing with matching coloured tile joint filler including curing, labour etc complete. For toilet.
34	Providing 20mm thick granite slab for wash counter , over a bed of 15mm thick C.M. 1:5 including dressing to suitable shape ,rounding ,polishing the edges etc, complete.
35	Providing 20mm thick granite slab for stair step , over a bed of 15mm thick C.M. 1:5 including dressing to suitable shape ,rounding ,polishing the edges etc, complete.
36	Laying and pointing vitrified tiles of approved quality over cement mortar 1:5 20mm thick and pointing the joints with water proof tile joint filler to match the tile etc. complete. for stair step Riser.

37	Supplying and fixing stainless steel handrail including cutting,welding,grinding,polishing,all materials and labour charges etc complete.for stair case.
38	Plumbing and sanitary using p.v.c pipe of ISI approved quality including pipe line work,c.p fittings, E.W.C,seat cover,taps,wash basin (CERA or equvalant) etc. complete. For toilet and kitchen.

The total cost for the construction of proposed building as per the above description and drawing.

Plinth Area

Ground Floor. = 7180 Sft

First Floor. = 7180 Sft

Second Floor. = 7180 Sft

Total 21540 Sft @1393 = **30005220.00**

Date: 22.01.2024



Preethi
DR. PREETHI NAIR
PRINCIPAL IN-CHARGE
SREE SANKARA COLLEGE
KALADY-683 574

REVISION	REMARKS	PROJECT TITLE : PROPOSED CONSTRUCTION OF SWAMI AGAMANANDA CENTRE FOR ADVANCED STUDIES, KALADY			
		CLIENT :	Scale :	Date :	
		SREE SANKARA ARTS COLLEGE, KALADY	NTS	22-01-2024	
		TITLE:	Drawn :	Checked :	
		CONCEPT LAYOUT - SECOND FLOOR	UB	UB	
			Drawing No :	AREA:	
			1	7180 SQFT	

All dimension are in centimeters
Do not scale out this drawing
Please contact the office for any clarification

UNITED BUILDERS
ENGINEERS, CONTRACTORS
AND INTERIORS
SREE SANKARA COLLEGE
GOKUL CHAMBERS, KANNAN THODATH LANE
EDAPALLY
Kochin-682024.
Ph:- 0484-2348322, 9388629312, 9349228322
E-mail: unitedbuilders135@gmail.com

**CIVIL STRUCTURAL & INTERIOR WORKS FOR RENOVATION WORKS OF
LIBRARY BLOCK AT SREE SANKARA COLLEGE KALADY**

SI. No.	DESCRIPTION	AMOUNT (Rs.)
A	CIVIL WORKS.	4,885,000.00
B	INTERIOR WORKS	3,345,000.00
C	ELECTRICAL WORKS	390,800.00
	TOTAL	8,620,800.00
	SAY Rs.	86.50 Lakhs
(Rupees Eighty Six Lakhs and Fifty Thousand Only)		




JOHNSON JOSEPH
 Director
 Feat Technical Services(P)Ltd.
 Kochi - 682 036

**CIVIL STRUCTURAL & INTERIOR WORKS FOR RENOVATION WORKS OF LIBRARY BLOCK AT SREE
SANKARA COLLEGE KALADY**

BILL OF QUANTITIES

Sl. No.	Description	Unit	Qty	Rate (Rs.)	Amount (Rs.)
1.00	DISMANTLING				
1.01	Dismantling Brick / Block / Laterite Masonry works with or without plastering, manually / by mechanical means including stacking of serviceable materials and disposal of unserviceable material at all leads at the risk of the contractor, including all charges.	CUM	65.00	1,000.00	65,000.00
1.02	Dismantling PCC / RCC works with or without plastering, manually / by mechanical means including stacking of serviceable materials and disposal of unserviceable material at all leads at the risk of the contractor, including all charges.	CUM	3.00	2,500.00	7,500.00
1.03	Dismantling roofing with Asbestose roofing sheets over roof truss including stacking of serviceable materials and disposal of the debris at all leads at the risk of the contractor, including all charges.	SQM	710.00	200.00	142,000.00
1.04	Dismantling False Ceiling below roof truss including scaffolding, stacking of serviceable materials and disposal of the unusable items at all leads at the risk of the contractor, including all charges.	SQM	550.00	200.00	110,000.00
2.00	MASONRY WORK				
2.01	Providing and constructing cement concrete solid block masonry 15 cm / 20 cm thick in C.M 1:6 (1 cement : 6 coarse sand) using solid block of size 30x20x15 cms and approved quality including scaffolding, raking out of joints, curing, cost and conveyance of all materials, labour, lead, lift, etc complete as per the direction of Engineer-in-Charge for all types of masonry works in super structure.				
a)	Ground Floor	CUM	1.00	6,250.00	6,250.00
b)	First Floor	CUM	5.00	6,500.00	32,500.00
3.00	WOOD WORK & ALUMINIUM WORKS				
3.01	Providing hardwood wooden planks 40mm thickness of specified size and shape as per drawing for staircase treads and fixing in position over fabricated staircase structure including cost and conveyance of all materials, labour, etc. as directed by Engineer-in-charge at all levels.				
a)	using well seasoned hardwood cheruthekku, thambakam or equivalent	CUM	1.00	150,000.00	150,000.00
3.02	Providing and fixing Hand rail with solid wood top rail 125 x 50mm with 50 x 50mm balusters including polishing with melamine polish, cost and conveyance of all materials, labour, etc. as directed by Engineer-in-charge at all levels.	RM	28.00	12,500.00	350,000.00



Johnson Joseph

JOHNSON JOSEPH
Director
Feat Technical Services(P)Ltd.
Kochi - 682 036

Sl. No.	Description	Unit	Qty	Rate (Rs.)	Amount (Rs.)
4.00	STEEL WORKS				
4.01	Steel work in built-up sections, framed work, using MS hollow sections / MS Pipes, grade 310 MPa, for Stairs etc as per drawings including cost of all materials, labour charge and conveyance, straightening, cutting, fabricating, hoisting & fixing in position and painting two coats of anti corrosive yellow zinc chromate primer & two coats of synthetic enamel paint of approved make etc. complete as directed by Engineer in-charge at all levels.	KG	1,500.00	150.00	225,000.00
5.00	ROOFING				
5.01	Supplying & fixing of Galvalume Hi Rib Profiled Sheeting 970mm-1000mm covered width, 26-28mm crest height at 195-200mm centres made out of 0.4 mm TCT cold rolled steel 550Mpa yield strength confirming to ASTM A 368 (OR) AS 1595 with hot dip metallic coating of minimum 150gm/sqm zinc aluminium alloy coating mass (55% aluminium, 43.5% zinc & 1.5% silicon) total of both sides as per ASTM A792 (OR) AS 1397. The colour shall have a total coating thickness of 35 micron of modified polyester paint system of approved colour comprising 20 micron exterior coat on top surface and 5 microns reverse coat on back surface over 5 micron primer coat on both sides. The roofing sheet shall be crest fixed to purlins with hot dip galvanized self drilling fasteners with EPDM washers. Minimum sheet overlap at end laps shall be 150mm. Penetration and end laps in sheet shall be sealed by using proper sealant. Rate shall include cost of conveyance of all material, lead, lift, scaffolding, labour charges etc. complete at all levels and as directed by Engineer In Charge.	SQM	710.00	750.00	532,500.00
5.02	Supplying & Fixing of 0.45 mm thick galvalume Profiled Ridge/Valley gutter/Flashing made out of 0.45 mm TCT cold rolled steel 550Mpa yield strength confirming to ASTM A 368 (OR) AS 1595 with hot dip metallic coating of minimum 150gm/sqm zinc aluminium alloy coating mass (55% aluminium, 43.5% zinc & 1.5% silicon) total of both sides as per ASTM A792 (OR) AS 1397. The colour shall have a total coating thickness of 35 micron of modified polyester paint system of approved colour comprising 20 micron exterior coat on top surface and 5 microns reverse coat on back surface over 5 micron primer coat on both sides fabricated to required size as per the site requirement up to 600mm girth. All the joints shall be sealed with proper sealant and stitched with stitching screws. Rate shall include cost of conveyance of all material, lead, lift, scaffolding, labour charges etc. complete at all levels and as directed by Engineer In Charge.	RM	25.00	600.00	15,000.00



JOHNSON JOSEPH
Director
Feat Technical Services(P)Ltd.
Kochi - 682 036

Sl. No.	Description	Unit	Qty	Rate (Rs.)	Amount (Rs.)
5.03	Providing and fixing suspended false ceiling, at all levels with 6mm thick multiwall PVC interlocking false ceiling panels with plain finish, as shown in the drawings over GI supporting system as per India Gypsum specifications, frame work fixed to the structural steel rooing truss / purlins, to perfect line and level. The rate shall include cost of providing GI sections as per specifications of India Gypsum, all labour charges, fixing the frame work to the truss members, providing necessary openings / cutouts in the ceiling, cost of all materials, lead, lift, labour, scaffolding charges etc., complete. The PVC false ceiling panels shall be fixed without any joints visible and with screws concealed in the interlocking portion. (The GI sections are G.I. Perimeter channels of size 20mm and 30mm 0.55mm thick, G.I. Intermediate channels of size 45mm x 15mm, 0.9mm thick, G.I Ceiling angle of 25mm x 10mm x 0.55mm, Ceiling section of 0.55mm thick, web of 51.5mm and two flanges of 26mm each with lips of 10.5mm, Anchor fastener 12.5mm dia x 40mm long etc.)	RM	525.00	850.00	446,250.00
6.00	FINISHING				
6.01	Providing and applying cement plaster 1:5 (1 cement and 5 fine sand) 12mm thick one coat floated hard and trowelled smooth to get a smooth finish to all surfaces such as walls, columns, beams, etc. on inside and outside, including cost and conveyance of all materials, labour, curing, etc as directed by Engineer-in-charge at all levels.	SQM	45.00	450.00	20,250.00
6.02	Painting the inside walls, ceiling etc., with ready mix plastic emulsion paint of approved quality two or more coats to get smooth even finish, over two coats of putty, a priming coat of cement primer, including cost and conveyance of all materials, labour charges, hire charges for scaffolding, etc., complete at all levels as directed by the Engineer-in-Charge.	SQM	1,400.00	425.00	595,000.00
6.03	Providing and applying antifungal exterior emulsion paint of approved quality and colour, two or more coats over a coat of exterior grade primer of approved brand, to all exterior surfaces such as walls, columns, ceiling, etc., after scraping and cleaning the surface and providing an even finish, including cost and conveyance of all materials, labour, hire charges for scaffolding, etc., as directed by Engineer-in-charge at all levels.	SQM	900.00	425.00	382,500.00
6.04	Providing and applying two coats of synthetic enamel paint of approved brand and colour over a priming coat of approved quality for existing painted wooden doors/ windows etc. scraping and cleaning the surface etc. including cost and conveyance of all materials, labour etc. complete as directed by engineer-in-charge at all levels.	SQM	250.00	375.00	93,750.00
6.05	Providing and applying two coats of synthetic enamel paint of approved brand and colour for roof truss, window grills etc. after scraping and cleaning the surface including cost and conveyance of all materials, labour etc. complete as directed by engineer-in-charge at all levels.	SQM	750.00	450.00	337,500.00



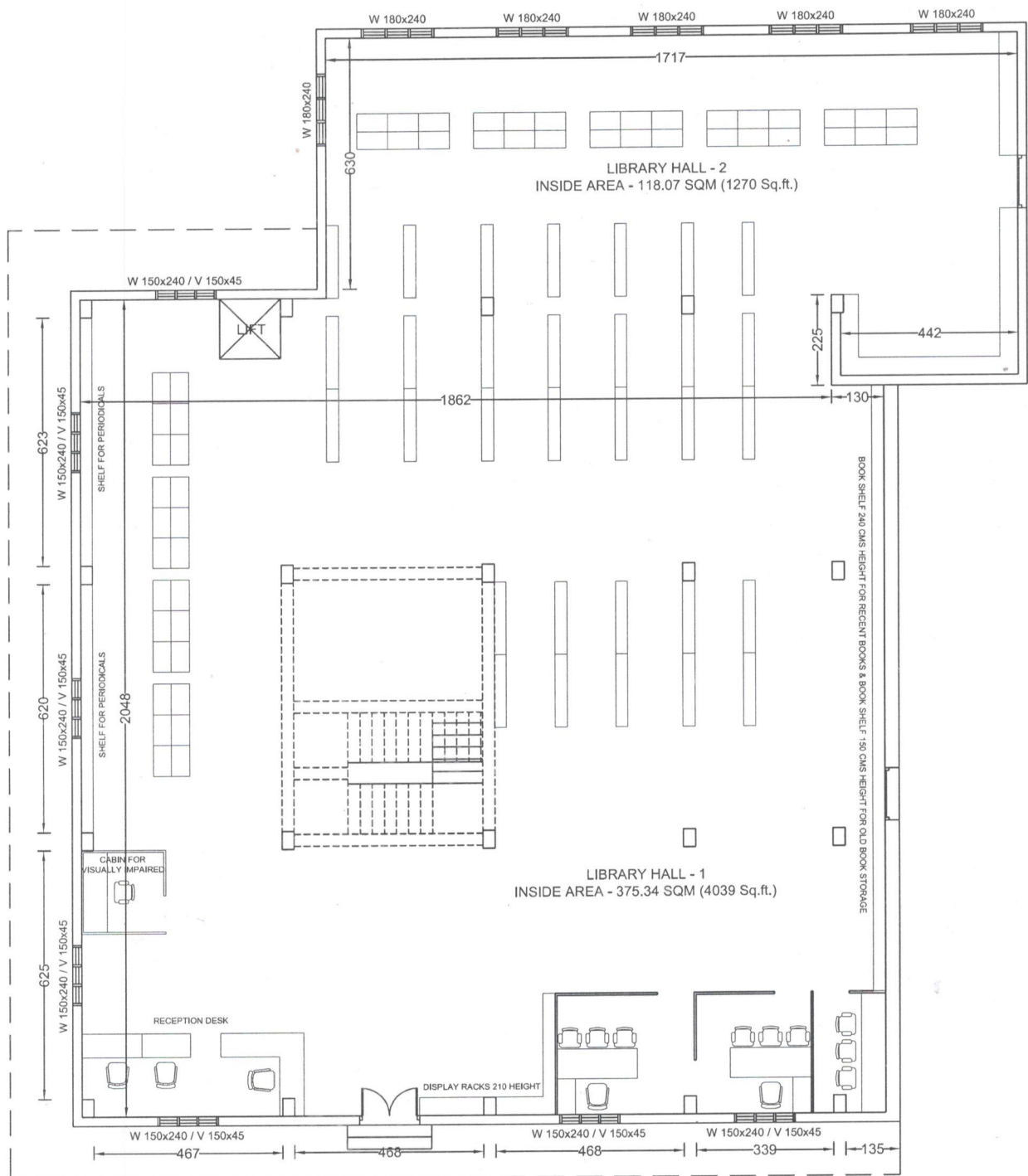
Johnson Joseph

JOHNSON JOSEPH
Director
Feat Technical Services(P)Ltd.
Kochi - 682 036

Sl. No.	Description	Unit	Qty	Rate (Rs.)	Amount (Rs.)
6.06	Providing and applying Melamine finish on wood work after scraping and cleaning the surface, applying necessary coats of approved wood filler and sealer, grinding with sand paper to get a perfectly smooth finish, including cost and conveyance of all materials, labour, scaffolding etc. complete.	SQM	30.00	1,800.00	54,000.00
7.00	FLOORING				
7.01	Providing and laying vitrified tiles of size 800 x 800 mm, or nearest size, in all colours & shade, in flooring, skirting etc, over 20 mm thick bed of cement mortar 1:4 (1 cement : 4 coarse sand) and cement slurry @ 3.3kg of cement per sqm., including grouting the joint with tile joint filler of matching shade etc. complete as directed by Engineer-in-Charge.	SQM	1,100.00	1,200.00	1,320,000.00
	TOTAL FOR CIVIL & STRUCTURAL WORKS				4,885,000.00
1.00	INTERIOR WORKS				
1.01	Providing and fixing Book shelf with 16mm thick marine plywood partitions, including painting the shell with 2 coats enamel paint over one coat primer, cost and conveyance of all materials, labour, etc. as directed by Engineer-in-charge at all levels.	SQM	115.00	10,000.00	1,150,000.00
1.02	Providing and fixing Display Racks with 16mm thick marine plywood partitions and facing side frame work using teakwood frame work and fully glazed teakwood openable shutters, including painting the shell with enamel paint over one coat primer and polishing framework and door with melamine polish, cost and conveyance of all materials, labour, etc. as directed by Engineer-in-charge at all levels.	SQM	50.00	20,000.00	1,000,000.00
1.03	Providing and fixing Partitions using gypsum board with suitable framework including painting with superior emulsion paint 2 coats over two coats of putty and on coat primer, cost and conveyance of all materials, labour, etc. as directed by Engineer-in-charge at all levels.	SQM	170.00	3,500.00	595,000.00
1.04	Providing and fixing work stations with 16mm thick marine plywood partitions, keyboard tray, space for CPU, 1 No. drawer etc., including painting the shell with 2 coats enamel paint over one coat primer, cost and conveyance of all materials, labour, etc. as directed by Engineer-in-charge at all levels.	SQM	30.00	10,000.00	300,000.00
1.05	Providing and fixing acoustic insulation for audio recording room including, cost and conveyance of all materials, labour, etc. as directed by Engineer-in-charge at all levels.	SQM	30.00	10,000.00	300,000.00
	TOTAL FOR INTERIOR WORKS				3,345,000.00




JOHNSON JOSEPH
 Director
Feat Technical Services(P)Ltd.
 Kochi - 682 036





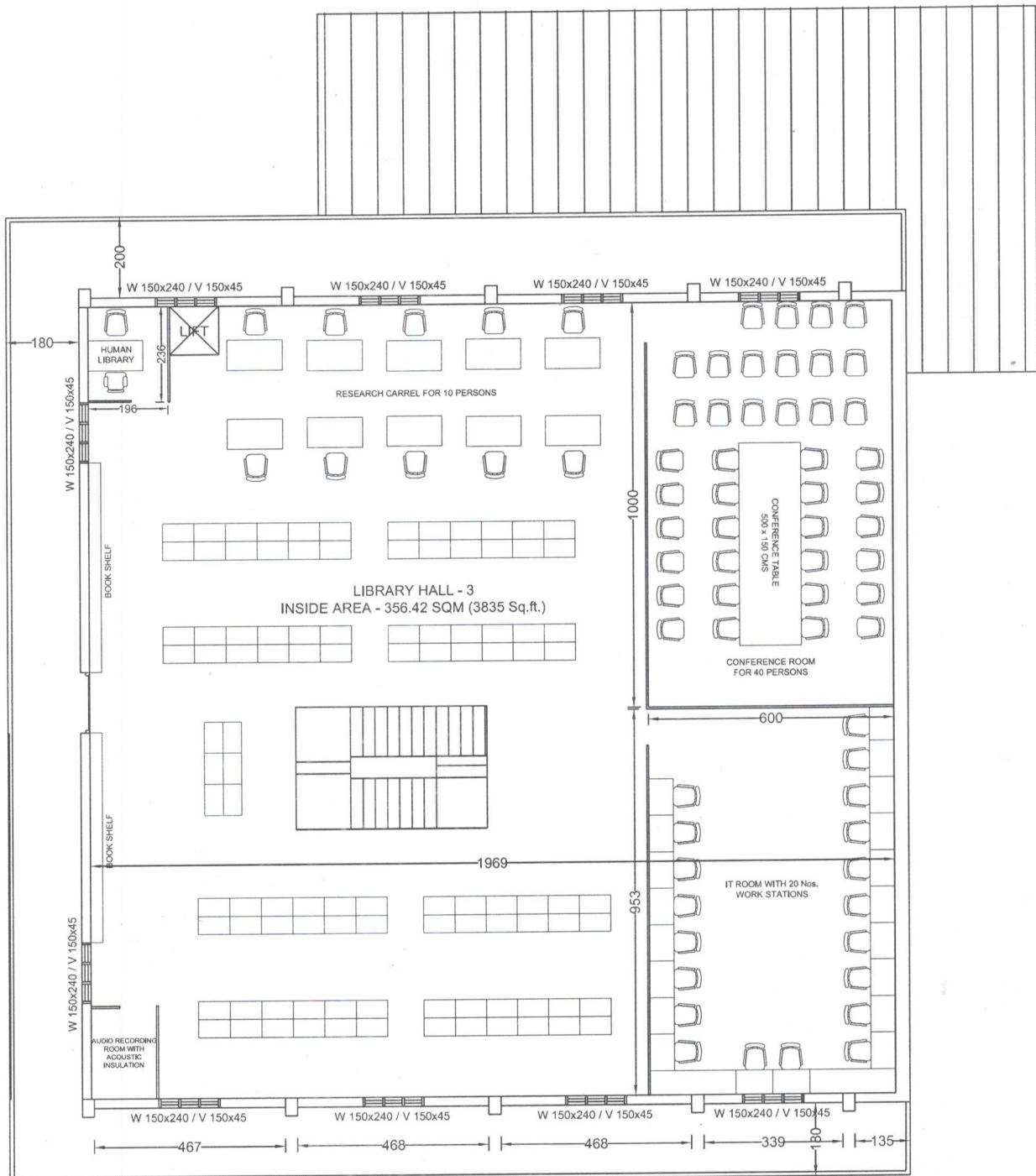
GROUND FLOOR PLAN



Signature
JOHNSON JOSEPH
 Director
Feat Technical Services(P)Ltd.
 Kochi - 682 036

NOTES:


				SCALE		DATE		DRAWN		CHECKED		CLIENT THE MANAGING TRUSTEE SRI ADI SANKARA TRUST SANKAR NAGAR, MATTOOR KALASHI P.O. KANAKULAM DISTRICT, PIN-682111		STRUCTURAL CONSULTANT  PROFESSIONAL CONSULTANTS Kochi - 682 036 Tel: 0484-4011888, 4010463 Email: featu@featu.com	
				1:100		25.07.2022		VADARU		SJ					
				JOB No.		DRG. No.		SHEET		REV					
				TS---		TS---CL-01/001		1 OF 3		0					
S.No.		DESCRIPTION		DATE		ISSUED FOR:		TENDER-PURPOSE		TITLE		BUILDING PLAN		PROJECT CONSULTANT  Feat Technical Services Pvt. Ltd. Ground floor, HSA-7, Panampilly Nagar, Cochin-682 036 Tel: 0484-4011888, 4010463 Email: featu@featu.com	



FIRST FLOOR PLAN

Johnson Joseph
JOHNSON JOSEPH
 Director
Feat Technical Services(P)Ltd.
 Kochi - 682 036

NOTES:

			SCALE	DATE	DRAWN	CHECKED	CLIENT	THE MANAGING DIRECTOR SRI ADI SANKARA TRUST SANKARA NAGAR, MATTOOR KALADI P.O. ERNAKULAM DISTRICT, PIN 680374	STRUCTURAL CONSULTANT  Associated Engineers & Architects P.O. Box 100, K. J. Somaiyasa Road, K. J. Somaiyasa Nagar, K. J. Somaiyasa Road, K. J. Somaiyasa Nagar, K. J. Somaiyasa Nagar, K. J. Somaiyasa Road, K. J. Somaiyasa Nagar, K. J. Somaiyasa Nagar, K. J. Somaiyasa Road, K. J. Somaiyasa Nagar, K. J. Somaiyasa Nagar, K. J. Somaiyasa Road, K. J. Somaiyasa Nagar, K. J. Somaiyasa Nagar, K. J. Somaiyasa Road, K. J. Somaiyasa Nagar, K. J. Somaiyasa Nagar, K. J. Somaiyasa Road, K. J. Somaiyasa Nagar, K. J. Somaiyasa Nagar, K. J. Somaiyasa Road, K. J. Somaiyasa Nagar, K. J. Somaiyasa Nagar, K. J. Somaiyasa Road, K. J. Somaiyasa Nagar, K. J. Somaiyasa Nagar, K. J. Somaiyasa Road, K. J. Somaiyasa Nagar, K. J. Somaiyasa Nagar, K. J. Somaiyasa Road, K. J. Somaiyasa Nagar, K. J. Somaiyasa Nagar, K. J. Somaiyasa Road, K. J. Somaiyasa Nagar, K. J. Somaiyasa Nagar, K. J. Somaiyasa Road, K. J. Somaiyasa Nagar, K. J. Somaiyasa Nagar, K. J. Somaiyasa Road, K. J. Somaiyasa Nagar, K. J. Somaiyasa Nagar, K. J. Somaiyasa Road, K. J. Somaiyasa Nagar, K. J. Somaiyasa Nagar, K. J. Somaiyasa Road, K. J. Somaiyasa Nagar, K. J. Somaiyasa Nagar, K. J. Somaiyasa Road, K. J. Somaiyasa Nagar, K. J. Somaiyasa Nagar, K. J. Somaiyasa Road, K. J. Somaiyasa Nagar, K. J. Somaiyasa Nagar, K. J. Somaiyasa Road, K. J. Somaiyasa Nagar, K. J. Somaiyasa Nagar, K. J. Somaiyasa Road, K. J. Somaiyasa Nagar, K. J. Somaiyasa Nagar, K. J. Somaiyasa Road, K. J. Somaiyasa Nagar, K. J. Somaiyasa Nagar, K. J. Somaiyasa Road, K. J. Somaiyasa Nagar, K. J. Somaiyasa Nagar, K. J. Somaiyasa Road, K. J. Somaiyasa Nagar, K. J. Somaiyasa Nagar, K. J. Somaiyasa Road, K. J. Somaiyasa Nagar, K. J. Somaiyasa Nagar, K. J. Somaiyasa Road, K. J. Somaiyasa Nagar, K. J. Somaiyasa Nagar, K. J. Somaiyasa Road, K. J. Somaiyasa Nagar, K. J. Somaiyasa Nagar, K. J. Somaiyasa Road, K. J. Somaiyasa Nagar, K. J. Somaiyasa Nagar, K. J. Somaiyasa Road, K. J. Somaiyasa Nagar, K. J. Somaiyasa Nagar, K. J. Somaiyasa Road, K. J. Somaiyasa Nagar, K. J. Somaiyasa Nagar, K. J. Somaiyasa Road, K. J. Somaiyasa Nagar, K. J. Somaiyasa Nagar, K. J. Somaiyasa Road, K. J. Somaiyasa Nagar, K. J. Somaiyasa Nagar, K. J. Somaiyasa Road, K. J. Somaiyasa Nagar, K. J. Somaiyasa Nagar, K. J. Somaiyasa Road, K. J. Somaiyasa Nagar, K. J. Somaiyasa Nagar, K. J. Somaiyasa Road, K. J. Somaiyasa Nagar, K. J. Somaiyasa Nagar, K. J. Somaiyasa Road, K. J. Somaiyasa Nagar, K. J. Somaiyasa Nagar, K. J. Somaiyasa Road, K. J. Somaiyasa Nagar, K. J. Somaiyasa Nagar, K. J. Somaiyasa Road, K. J. Somaiyasa Nagar, K. J. Somaiyasa Nagar, K. J. Somaiyasa Road, K. J. Somaiyasa Nagar, K. J. Somaiyasa Nagar, K. J. Somaiyasa Road, K. J. Somaiyasa Nagar, K. J. Somaiyasa Nagar, K. J. Somaiyasa Road, K. J. Somaiyasa Nagar, K. J. Somaiyasa Nagar, K. J. Somaiyasa Road, K. J. Somaiyasa Nagar, K. J. Somaiyasa Nagar, K. J. Somaiyasa Road, K. J. Somaiyasa Nagar, K. J. Somaiyasa Nagar, K. J. Somaiyasa Road, K. J. Somaiyasa Nagar, K. J. Somaiyasa Nagar, K. J. Somaiyasa Road, K. J. Somaiyasa Nagar, K. J. Somaiyasa Nagar, K. J. Somaiyasa Road, K. J. Somaiyasa Nagar, K. J. Somaiyasa Nagar, K. J. Somaiyasa Road, K. J. Somaiyasa Nagar, K. J. Somaiyasa Nagar, K. J. Somaiyasa Road, K. J. Somaiyasa Nagar, K. J. Somaiyasa Nagar, K. J. Somaiyasa Road, K. J. Somaiyasa Nagar, K. J. Somaiyasa Nagar, K. J. Somaiyasa Road, K. J. Somaiyasa Nagar, K. J. Somaiyasa Nagar, K. J. Somaiyasa Road, K. J. Somaiyasa Nagar, K. J. Somaiyasa Nagar, K. J. Somaiyasa Road, K. J. Somaiyasa Nagar, K. J. Somaiyasa Nagar, K. J. Somaiyasa Road, K. J. Somaiyasa Nagar, K. J. Somaiyasa Nagar, K. J. Somaiyasa Road, K. J. Somaiyasa Nagar, K. J. Somaiyasa Nagar, K. J. Somaiyasa Road, K. J. Somaiyasa Nagar, K. J. Somaiyasa Nagar, K. J. Somaiyasa Road, K. J. Somaiyasa Nagar, K. J. Somaiyasa Nagar, K. J. Somaiyasa Road, K. J. Somaiyasa Nagar, K. J. Somaiyasa Nagar, K. J. Somaiyasa Road, K. J. Somaiyasa Nagar, K. J. Somaiyasa Nagar, K. J. Somaiyasa Road, K. J. Somaiyasa Nagar, K. J. Somaiyasa Nagar, K. J. Somaiyasa Road, K. J. Somaiyasa Nagar, K. J. Somaiyasa Nagar, K. J. Somaiyasa Road, K. J. Somaiyasa Nagar, K. J. Somaiyasa Nagar, K. J. Somaiyasa Road, K. J. Somaiyasa Nagar, K. J. Somaiyasa Nagar, K. J. Somaiyasa Road, K. J. Somaiyasa Nagar, K. J. Somaiyasa Nagar, K. J. Somaiyasa Road, K. J. Somaiyasa Nagar, K. J. Somaiyasa Nagar, K. J. Somaiyasa Road, K. J. Somaiyasa Nagar, K. J. Somaiyasa Nagar, K. J. Somaiyasa Road, K. J. Somaiyasa Nagar, K. J. Somaiyasa Nagar, K. J. Somaiyasa Road, K. J. Somaiyasa Nagar, K. J. Somaiyasa Nagar, K. J. Somaiyasa Road, K. J. Somaiyasa Nagar, K. J. Somaiyasa Nagar, K. J. Somaiyasa Road, K. J. Somaiyasa Nagar, K. J. Somaiyasa Nagar, K. J. Somaiyasa Road, K. J. Somaiyasa Nagar, K. J. Somaiyasa Nagar, K. J. Somaiyasa Road, K. J. Somaiyasa Nagar, K. J. Somaiyasa Nagar, K. J. Somaiyasa Road, K. J. Somaiyasa Nagar, K. J. Somaiyasa Nagar, K. J. Somaiyasa Road, K. J. Somaiyasa Nagar, K. J. Somaiyasa Nagar, K. J. Somaiyasa Road, K. J. Somaiyasa Nagar, K. J. Somaiyasa Nagar, K. J. Somaiyasa Road, K. J. Somaiyasa Nagar, K. J. Somaiyasa Nagar, K. J. Somaiyasa Road, K. J. Somaiyasa Nagar, K. J. Somaiyasa Nagar, K. J. Somaiyasa Road, K. J. Somaiyasa Nagar, K. J. Somaiyasa Nagar, K. J. Somaiyasa Road, K. J. Somaiyasa Nagar, K. J. Somaiyasa Nagar, K. J. Somaiyasa Road, K. J. Somaiyasa Nagar, K. J. Somaiyasa Nagar, K. J. Somaiyasa Road, K. J. Somaiyasa Nagar, K. J. Somaiyasa Nagar, K. J. Somaiyasa Road, K. J. Somaiyasa Nagar, K. J. Somaiyasa Nagar, K. J. Somaiyasa Road, K. J. Somaiyasa Nagar, K. J. Somaiyasa Nagar, K. J. Somaiyasa Road, K. J. Somaiyasa Nagar, K. J. Somaiyasa Nagar, K. J. Somaiyasa Road, K. J. Somaiyasa Nagar, K. J. Somaiyasa Nagar, K. J. Somaiyasa Road, K. J. Somaiyasa Nagar, K. J. Somaiyasa Nagar, K. J. Somaiyasa Road, K. J. Somaiyasa Nagar, K. J. Somaiyasa Nagar, K. J. Somaiyasa Road, K. J. Somaiyasa Nagar, K. J. Somaiyasa Nagar, K. J. Somaiyasa Road, K. J. Somaiyasa Nagar, K. J. Somaiyasa Nagar, K. J. Somaiyasa Road, K. J. Somaiyasa Nagar, K. J. Somaiyasa Nagar, K. J. Somaiyasa Road, K. J. Somaiyasa Nagar, K. J. Somaiyasa Nagar, K. J. Somaiyasa Road, K. J. Somaiyasa Nagar, K. J. Somaiyasa Nagar, K. J. Somaiyasa Road, K. J. Somaiyasa Nagar, K. J. Somaiyasa Nagar, K. J. Somaiyasa Road, K. J. Somaiyasa Nagar, K. J. Somaiyasa Nagar, K. J. Somaiyasa Road, K. J. Somaiyasa Nagar, K. J. Somaiyasa Nagar, K. J. Somaiyasa Road, K. J. Somaiyasa Nagar, K. J. Somaiyasa Nagar, K. J. Somaiyasa Road, K. J. Somaiyasa Nagar, K. J. Somaiyasa Nagar, K. J. Somaiyasa Road, K. J. Somaiyasa Nagar, K. J. Somaiyasa Nagar, K. J. Somaiyasa Road, K. J. Somaiyasa Nagar, K. J. Somaiyasa Nagar, K. J. Somaiyasa Road, K. J. Somaiyasa Nagar, K. J. Somaiyasa Nagar, K. J. Somaiyasa Road, K. J. Somaiyasa Nagar, K. J. Somaiyasa Nagar, K. J. Somaiyasa Road, K. J. Somaiyasa Nagar, K. J. Somaiyasa Nagar, K. J. Somaiyasa Road, K. J. Somaiyasa Nagar, K. J. Somaiyasa Nagar, K. J. Somaiyasa Road, K. J. Somaiyasa Nagar, K. J. Somaiyasa Nagar, K. J. Somaiyasa Road, K. J. Somaiyasa Nagar, K. J. Somaiyasa Nagar, K. J. Somaiyasa Road, K. J. Somaiyasa Nagar, K. J. Somaiyasa Nagar, K. J. Somaiyasa Road, K. J. Somaiyasa Nagar, K. J. Somaiyasa Nagar, K. J. Somaiyasa Road, K. J. Somaiyasa Nagar, K. J. Somaiyasa Nagar, K. J. Somaiyasa Road, K. J. Somaiyasa Nagar, K. J. Somaiyasa Nagar, K. J. Somaiyasa Road, K. J. Somaiyasa Nagar, K. J. Somaiyasa Nagar, K. J. Somaiyasa Road, K. J. Somaiyasa Nagar, K. J. Somaiyasa Nagar, K. J. Somaiyasa Road, K. J. Somaiyasa Nagar, K. J. Somaiyasa Nagar, K. J. Somaiyasa Road, K. J. Somaiyasa Nagar, K. J. Somaiyasa Nagar, K. J. Somaiyasa Road, K. J. Somaiyasa Nagar, K. J. Somaiyasa Nagar, K. J. Somaiyasa Road, K. J. Somaiyasa Nagar, K. J. Somaiyasa Nagar, K. J. Somaiyasa Road, K. J. Somaiyasa Nagar, K. J. Somaiyasa Nagar, K. J. Somaiyasa Road, K. J. Somaiyasa Nagar, K. J. Somaiyasa Nagar, K. J. Somaiyasa Road, K. J. Somaiyasa Nagar, K. J. Somaiyasa Nagar, K. J. Somaiyasa Road, K. J. Somaiyasa Nagar, K. J. Somaiyasa Nagar, K. J. Somaiyasa Road, K. J. Somaiyasa Nagar, K. J. Somaiyasa Nagar, K. J. Somaiyasa Road, K. J. Somaiyasa Nagar, K. J. Somaiyasa Nagar, K. J. Somaiyasa Road, K. J. Somaiyasa Nagar, K. J. Somaiyasa Nagar, K. J. Somaiyasa Road, K. J. Somaiyasa Nagar, K. J. Somaiyasa Nagar, K. J. Somaiyasa Road, K. J. Somaiyasa Nagar, K. J. Somaiyasa Nagar, K. J. Somaiyasa Road, K. J. Somaiyasa Nagar, K. J. Somaiyasa Nagar, K. J. Somaiyasa Road, K. J. Somaiyasa Nagar, K. J. Somaiyasa Nagar, K. J. Somaiyasa Road, K. J. Somaiyasa Nagar, K. J. Somaiyasa Nagar, K. J. Somaiyasa Road, K. J. Somaiyasa Nagar, K. J. Somaiyasa Nagar, K. J. Somaiyasa Road, K. J. Somaiyasa Nagar, K. J. Somaiyasa Nagar, K. J. Somaiyasa Road, K. J. Somaiyasa Nagar, K. J. Somaiyasa Nagar, K. J. Somaiyasa Road, K. J. Somaiyasa Nagar, K. J. Somaiyasa Nagar, K. J. Somaiyasa Road, K. J. Somaiyasa Nagar, K. J. Somaiyasa Nagar, K. J. Somaiyasa Road, K. J. Somaiyasa Nagar, K. J. Somaiyasa Nagar, K. J. Somaiyasa Road, K. J. Somaiyasa Nagar, K. J. Somaiyasa Nagar, K. J. Somaiyasa Road, K. J. Somaiyasa Nagar, K. J. Somaiyasa Nagar, K. J. Somaiyasa Road, K. J. Somaiyasa Nagar, K. J. Somaiyasa Nagar, K. J. Somaiyasa Road, K. J. Somaiyasa Nagar, K. J. Somaiyasa Nagar, K. J. Somaiyasa Road, K. J. Somaiyasa Nagar, K. J. Somaiyasa Nagar, K. J. Somaiyasa Road, K. J. Somaiyasa Nagar, K. J. Somaiyasa Nagar, K. J. Somaiyasa Road, K. J. Somaiyasa Nagar, K. J. Somaiyasa Nagar, K. J. Somaiyasa Road, K. J. Somaiyasa Nagar, K. J. Somaiyasa Nagar, K. J. Somaiyasa Road, K. J. Somaiyasa Nagar, K. J. Somaiyasa Nagar, K. J. Somaiyasa Road, K. J. Somaiyasa Nagar, K. J. Somaiyasa Nagar, K. J. Somaiyasa Road, K. J. Somaiyasa Nagar, K. J. Somaiyasa Nagar, K. J. Somaiyasa Road, K. J. Somaiyasa Nagar, K. J. Somaiyasa Nagar, K. J. Somaiyasa Road, K. J. Somaiyasa Nagar, K. J. Somaiyasa Nagar, K. J. Somaiyasa Road, K. J. Somaiyasa Nagar, K. J. Somaiyasa Nagar, K. J. Somaiyasa Road, K. J. Somaiyasa Nagar, K. J. Somaiyasa Nagar, K. J. Somaiyasa Road, K. J. Somaiyasa Nagar, K. J. Somaiyasa Nagar, K. J. Somaiyasa Road, K. J. Somaiyasa Nagar, K. J. Somaiyasa Nagar, K. J. Somaiyasa Road, K. J. Somaiyasa Nagar, K. J. Somaiyasa Nagar, K. J. Somaiyasa Road, K. J. Somaiyasa Nagar, K. J. Somaiyasa Nagar, K. J. Somaiyasa Road, K. J. Somaiyasa Nagar, K. J. Somaiyasa Nagar, K. J. Somaiyasa Road, K. J. Somaiyasa Nagar, K. J. Somaiyasa Nagar, K. J. Somaiyasa Road, K. J. Somaiyasa Nagar, K. J. Somaiyasa Nagar, K. J. Somaiyasa Road, K. J. Somaiyasa Nagar, K. J. Somaiyasa Nagar, K. J. Somaiyasa Road, K. J. Somaiyasa Nagar, K. J. Somaiyasa Nagar, K. J. Somaiyasa Road, K. J. Somaiyasa Nagar, K. J. Somaiyasa Nagar, K. J. Somaiyasa Road, K. J. Somaiyasa Nagar, K. J. Somaiyasa Nagar, K. J. Somaiyasa Road, K. J. Somaiyasa Nagar, K. J. Somaiyasa Nagar, K. J. Somaiyasa Road, K. J. Somaiyasa Nagar, K. J. Somaiyasa Nagar, K. J. Somaiyasa Road, K. J. Somaiyasa Nagar, K. J. Somaiyasa Nagar, K. J. Somaiyasa Road, K. J. Somaiyasa Nagar, K. J. Somaiyasa Nagar, K. J. Somaiyasa Road, K. J. Somaiyasa Nagar, K. J. Somaiyasa Nagar, K. J. Somaiyasa Road, K. J. Somaiyasa Nagar, K. J. Somaiyasa Nagar, K. J. Somaiyasa Road, K. J. Somaiyasa Nagar, K. J. Somaiyasa Nagar, K. J. Somaiyasa Road, K. J. Somaiyasa Nagar, K. J. Somaiyasa Nagar, K. J. Somaiyasa Road, K. J. Somaiyasa Nagar, K. J. Somaiyasa Nagar, K. J. Somaiyasa Road, K. J. Somaiyasa Nagar, K. J. Somaiyasa Nagar, K. J. Somaiyasa Road, K. J. Somaiyasa Nagar, K. J. Somaiyasa Nagar, K. J. Somaiyasa Road, K. J. Somaiyasa Nagar, K. J. Somaiyasa Nagar, K. J. Somaiyasa Road, K. J. Somaiyasa Nagar, K. J. Somaiyasa Nagar, K. J. Somaiyasa Road, K. J. Somaiyasa Nagar, K. J. Somaiyasa Nagar, K. J. Somaiyasa Road, K. J. Somaiyasa Nagar, K. J. Somaiyasa Nagar, K. J. Somaiyasa Road, K. J. Somaiyasa Nagar, K. J. Somaiyasa Nagar, K. J. Somaiyasa Road, K. J. Somaiyasa Nagar, K. J. Somaiyasa Nagar, K. J. Somaiyasa Road, K. J. Somaiyasa Nagar, K. J. Somaiyasa Nagar, K. J. Somaiyasa Road, K. J. Somaiyasa Nagar, K. J. Somaiyasa Nagar, K. J. Somaiyasa Road, K. J. Somaiyasa Nagar, K. J. Somaiyasa Nagar, K. J. Somaiyasa Road, K. J. Somaiyasa Nagar, K. J. Somaiyasa Nagar, K. J. Somaiyasa Road, K. J. Somaiyasa Nagar, K. J. Somaiyasa Nagar, K. J. Somaiyasa Road, K. J. Somaiyasa Nagar, K. J. Somaiyasa Nagar, K. J. Somaiyasa Road, K. J. Somaiyasa Nagar, K. J. Somaiyasa Nagar, K. J. Somaiyasa Road, K. J. Somaiyasa Nagar, K. J. Somaiyasa Nagar, K. J. Somaiyasa Road, K. J. Somaiyasa Nagar, K. J. Somaiyasa Nagar, K. J. Somaiyasa Road, K. J. Somaiyasa Nagar, K. J. Somaiyasa Nagar, K. J. Somaiyasa Road, K. J. Somaiyasa Nagar, K. J. Somaiyasa Nagar, K. J. Somaiyasa Road, K. J. Somaiyasa Nagar, K. J. Somaiyasa Nagar, K. J. Somaiyasa Road, K. J. Somaiyasa Nagar, K. J. Somaiyasa Nagar, K. J. Somaiyasa Road, K. J. Somaiyasa Nagar, K. J. Somaiyasa Nagar, K. J. Somaiyasa Road, K. J. Somaiyasa Nagar, K. J. Somaiyasa Nagar, K. J. Somaiyasa Road, K. J. Somaiyasa Nagar, K. J. Somaiyasa Nagar, K. J. Somaiyasa Road, K. J. Somaiyasa Nagar, K. J. Somaiyasa Nagar, K. J. Somaiyasa Road, K. J. Somaiyasa Nagar, K. J. Somaiyasa Nagar, K. J. Somaiyasa Road, K. J. Somaiyasa Nagar, K. J. Somaiyasa Nagar, K. J. Somaiyasa Road, K. J. Somaiyasa Nagar, K. J. Somaiyasa Nagar, K. J. Somaiyasa Road, K. J. Somaiyasa Nagar, K. J. Somaiyasa Nagar, K. J. Somaiyasa Road, K. J. Somaiyasa Nagar, K. J. Somaiyasa Nagar, K. J. Somaiyasa Road, K. J. Somaiyasa Nagar, K. J. Somaiyasa Nagar, K. J. Somaiyasa Road, K. J. Somaiyasa Nagar, K. J. Somaiyasa Nagar, K. J. Somaiyasa Road, K. J. Somaiyasa Nagar, K. J. Somaiyasa Nagar, K. J. Somaiyasa Road, K. J. Somaiyasa Nagar,<
--	--	--	-------	------	-------	---------	--------	--	--

Associated
 PROJECT CONSULTANT
Feat Technical Services Pvt.Ltd.
 Ground Floor, HB-47, Panampilly Nagar, Cochin 682 036
 Tel: 0484-4011868, 4010463 Email: feat@featindia.com

ESTIMATE OF PROPOSED COSTRUCTION OF WORKING WOMENS HOSTEL BUILDING FOR SREE SANKARA COLLEGE MATTOOR KALADY.	
S/No.	Description
I	GROUND FLOOR, FIRST FLOOR, SECOND FLOOR.
1	Earthwork excavation in ordinary soil and depositing on bank including back filling , cost of all labour charges etc. complete .
2	Plain Cement Concrete 1:4:8 using 40mm nominal size broken stones below plinth beam including laying, consolidating, curing, shuttering, etc complete
3	Reinforced cement concrete M20 Grade using 20mm down size aggregate for Column footing including form work watering, curing all materials and labour charges etc. complete.
4	Reinforced cement concrete M20 Grade using 20mm down size aggregate for Plinth Beam including form work watering, curing all materials and labour charges etc. complete.
5	Reinforced cement concrete M20 Grade using 20mm down size aggregate for Columns including all formwork, watering, curing etc. complete
6	Solid block Masonry work in cement mortar 1:6 with Solid Block of specified size for basement including form work watering, curing all materials and labour charges etc. complete.for foundation
7	Plastering with C.M. 1:4, 12mm thick for inner walls , one coat, floated hard and trowelled smooth including scaffolding, curing, etc complete.for basement.
8	Quarry dust filling inside basement including watering, consolidation in layers to get a procter density of 95%.
9	Masonry work in cement mortar 1:5 with Solid Block of specified size including scaffolding, curing, etc complete. For superstructure.
10	Half Brick work in cement mortar 1:5 with solid blocks of specified size for superstructure at all heights including scaffolding, curing, etc complete.
11	Reinforced cement concrete M20 Grade using 20mm down size aggregate for lintel including all formwork, watering, curing etc. complete
12	Reinforced cement concrete M20 Grade using 20mm down size aggregate for beams including all formwork, watering, curing etc. complete
13	Reinforced cement concrete M20 Grade using 20mm down size aggregate for stair case including all formwork, watering, curing etc. complete
14	Reinforced cement concrete M20 Grade using 20mm down size aggregate for sunshade & thin slab including all formwork, watering, curing etc. complete
15	Reinforced cement concrete M20 grade using 20mm down size aggregate for Roof slab(flat) including all form work, watering, curing etc. complete
16	Reinforcement for RCC works,bent,tied and placed in position using corrision resistant ribbed tor steel including welding of laps etc complete.for pile cap and Plinth beam.

17	Plain Cement Concrete 1:4:8 using 40mm nominal size broken stones for flooring, including laying, consolidating, curing, shuttering, etc complete.for flooring.
18	Plastering with C.M. 1:3 9mm thick for under sides of slabs & sunshades , one coat floated hard and trowelled smooth including scaffolding, curing, etc complete. For ceiling
19	Plastering with C.M. 1:4, 12mm thick for inner walls , one coat, floated hard and trowelled smooth including scaffolding, curing, etc complete.
20	Plastering with C.M. 1:4, 12mm thick for outer walls , one coat, floated hard and trowelled smooth including scaffolding, curing, etc complete.
21	Providing watercutting in required areas.
22	Supplying and fixing wooden paneled doors and wooden outer frame made out of anjilly or mahagony with necessary fittings like hinges,mortice lock,tower bolt,door bush including all materials and labour charges,for entrance and rear
23	Supplying and fixing PVC doors with necessary fittings like hinges,towerbolt including all materials and labour charges etc complete.for toilet.
24	Supplying and fixing wooden glazed windows made out of anjilly or mahagony with necessary fittings like hinges,hooks& eye ,M S guard bars including all materials and labour charges.
26	Painting 2 coats of acrylic interior emulsion for Ceiling having approved quality and colour, one coat of cement primer after rubbing with sand paper and properly cleaning the surface etc complete.
27	Painting 2 coats of acrylic interior emulsion for inside walls having approved quality and colour, one coat of cement primer after rubbing with sand paper and properly cleaning the surface etc complete.
28	Painting 2 coats of acrylic exterior emulsion for outside walls having approved quality and colour, over a priming coat after rubbing with sand paper and properly cleaning the surface etc complete.
29	Painting 2 coats of synthetic enamel for doors & windows,grills having approved quality and colour, over a priming coat after rubbing with sand paper and properly cleaning the surface etc complete.
30	Laying and pointing vitrified tiles of approved quality over cement mortar 1:5 20mm thick and pointing the joints with water proof tile joint filler to match the tile etc. complete for floors.
31	Skirting with vitrified tiles in C.M. 1:6 cement grout for binding and filling the joints with suitable colored joint filler including all materials and labour charges etc, complete.
32	Laying and pointing ceramic tiles of approved quality over cement mortar 1:5 20mm thick and pointing the joints with epoxy joint filler to match the tile etc. complete for toilet floor.
33	Dadoing walls with best quality glazed tiles 200mm x 150mm or nearest size of approved quality fixed with neat cement grout and pointing with matching coloured tile joint filler including curing , labour etc complete. For toilet.
34	Providing 20mm thick granite slab for wash counter , over a bed of 15mm thick C.M. 1:5 including dressing to suitable shape ,rounding ,polishing the edges etc, complete.
35	Providing 20mm thick granite slab for stair step , over a bed of 15mm thick C.M. 1:5 including dressing to suitable shape ,rounding ,polishing the edges etc, complete.
36	Laying and pointing vitrified tiles of approved quality over cement mortar 1:5 20mm thick and pointing the joints with water proof tile joint filler to match the tile etc. complete. for stair step Riser.

37	Supplying and fixing stainless steel handrail including cutting,welding,grinding,polishing,all materials and labour charges etc complete.for stair case.
38	Plumbing and sanitary using p.v.c pipe of ISI approved quality including pipe line work,c.p fittings, E.W.C,seat cover,taps,wash basin (CERA or equivalant) etc. complete. For toilet and kitchen.

The total cost for the construction of proposed building as per the above description and drawing.

Plinth Area

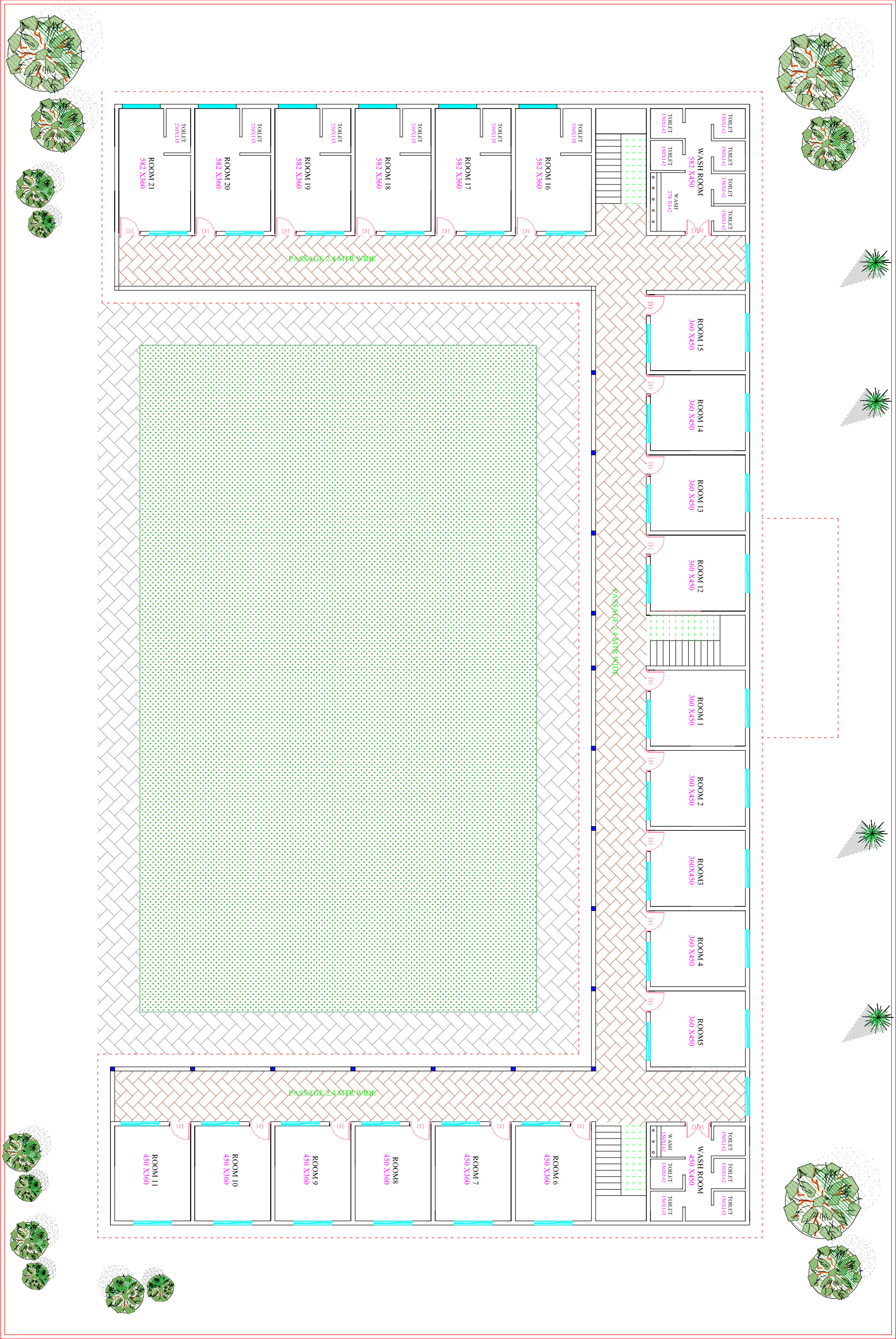
Ground Floor. = 8333 Sft

First Floor. = 8333 Sft

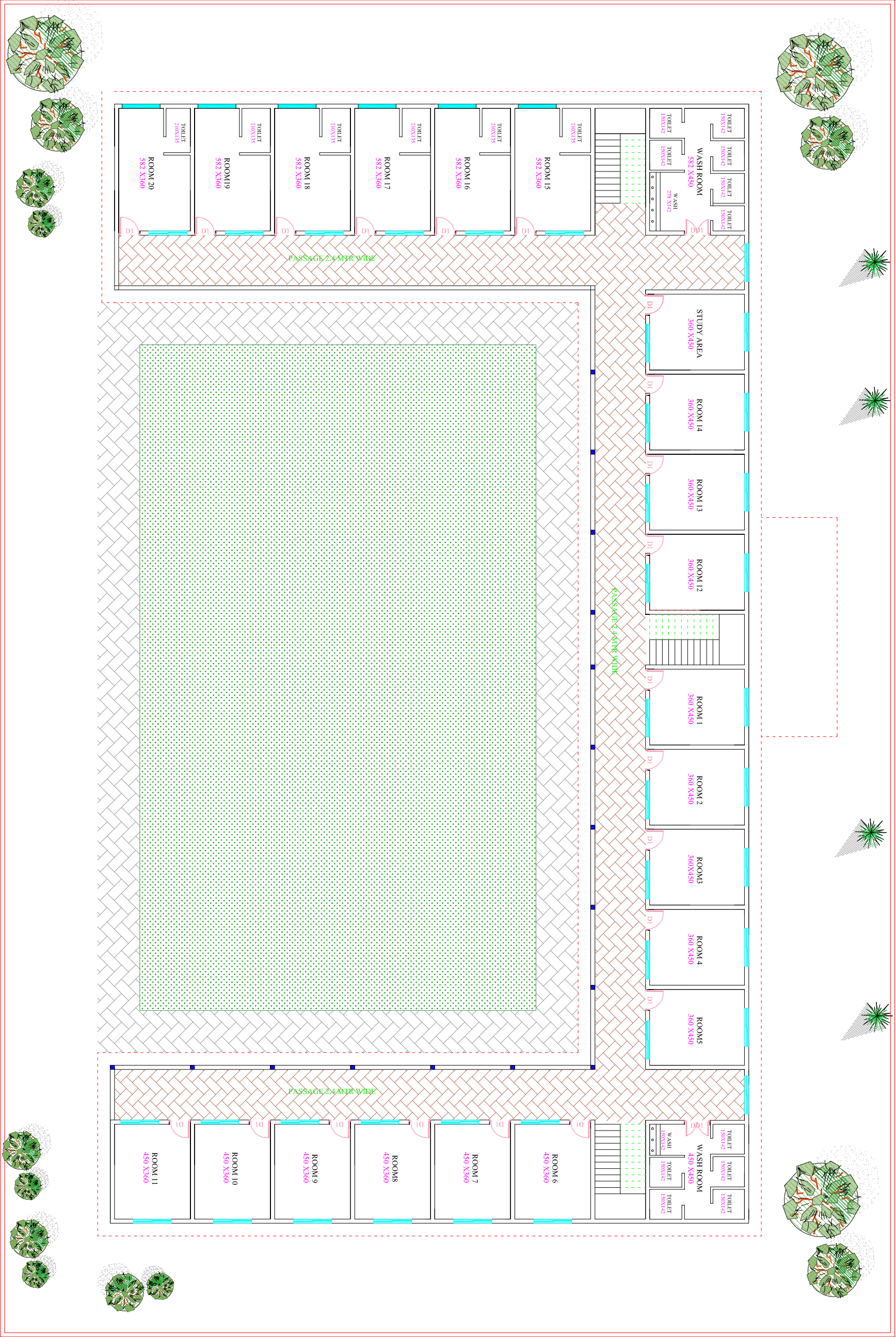
Second Floor. = 8333 Sft

Total 25000 Sft @ 2000.00 =50000000.00

Date: 24.01.2024



REVISION	REMARKS		PROJECT TITLE : PROPOSED HOSTEL BUILDING FOR WORKING WOMENS, KALADY			
			CLIENT : SREE SANKARA ARTS COLLEGE, KALADY	Scale : NTS	Date : 24-01-2024	
			TITLE: CONCEPT LAYOUT - SECOND FLOOR	Drawn : UB	Checked : UB	AREA: 8333 SQFT
All dimension are in centimeters Do not scale out this drawing Please contact the office for any clarification			ENGINEERS, CONTRACTORS AND INTERIORS GOKUL CHAMBERS,KANNANTHODATH LANE EDAPALLY Kochin-682024. Ph:- 0484-2348322,9386629312,9349228322 E-mail: unitedbuilders135@gmail.com			



REVISION		REMARKS	
		PROJECT TITLE : PROPOSED HOSTEL BUILDING FOR WORKING WOMENS, KALADY	
		CLIENT : SREE SANKARA ARTS COLLEGE, KALADY	Scale : NTS
		TITLE: CONCEPT LAYOUT - FIRST FLOOR	Drawn : UB
			Checked : UB
			AREA: 8333 SQT
		ENGINEERS, CONTRACTORS AND INTERIORS GOKUL CHAMBERS,KANNANTHODATH LANE EDAPALLY Kochin-682024. Ph:- 0484-2348322,938629312,9349228322 E-mail: unitedbuilders135@gmail.com	

All dimension are in centimeters
Do not scale out this drawing
Please contact the office for any clarification

UNITED BUILDERS